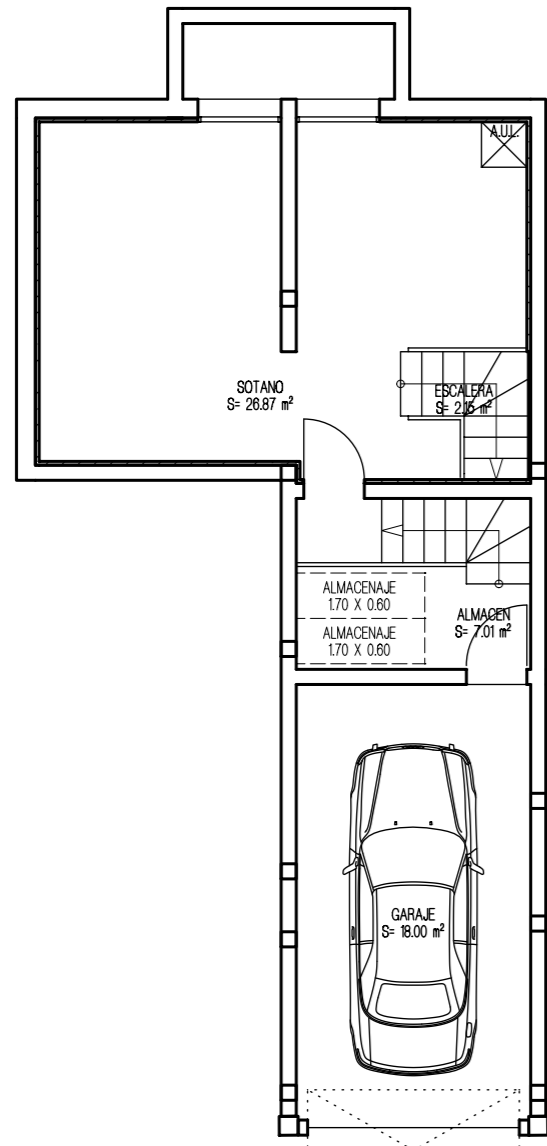


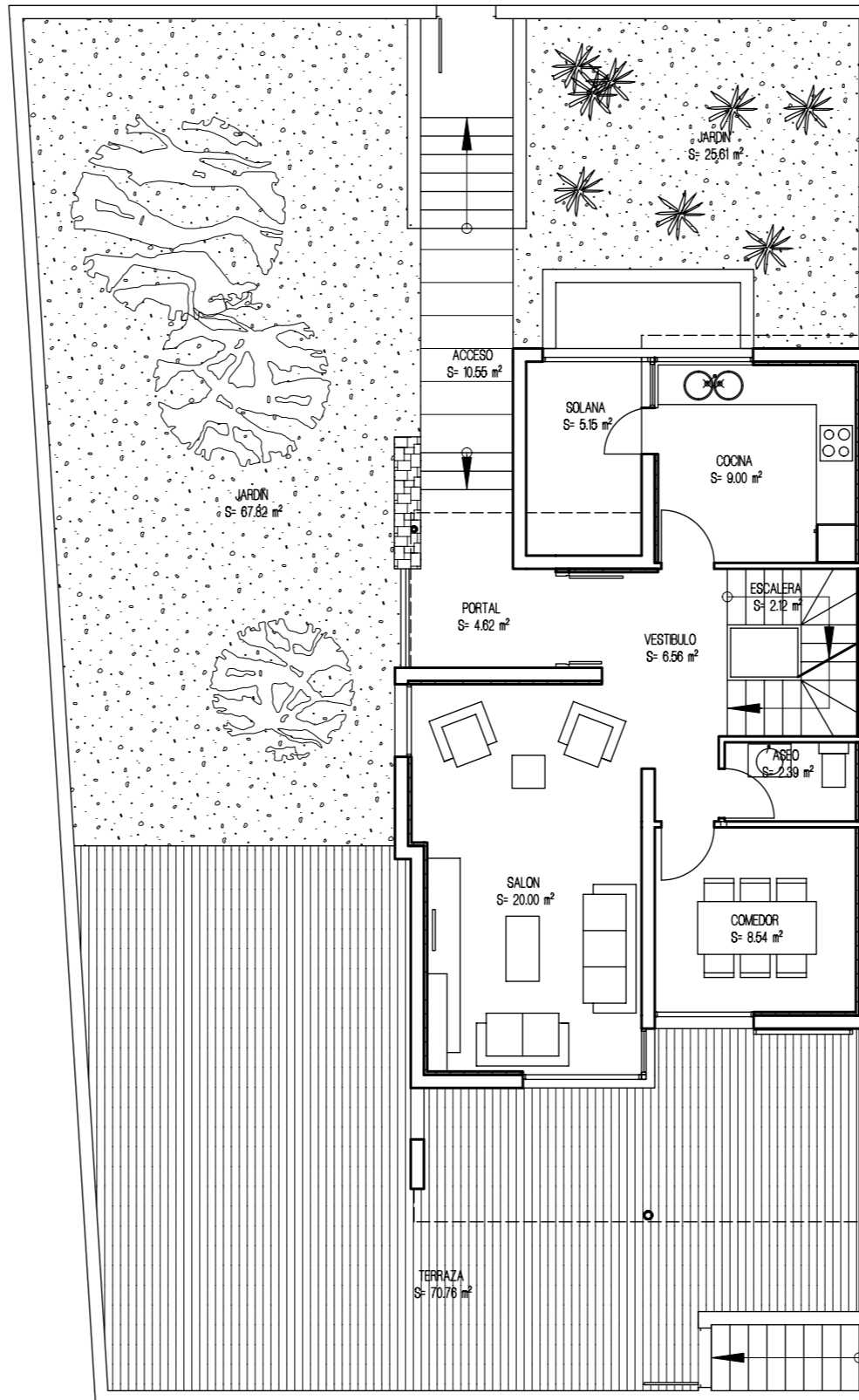
VIVIENDA UNIFAMILIAR 1 - TIPO 4A'

PLANTA GARAJE

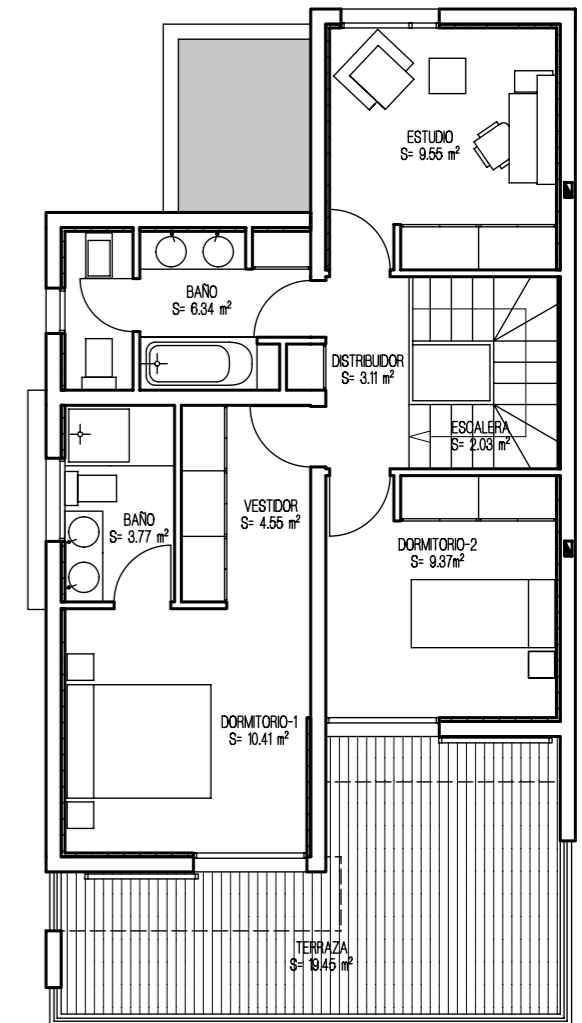


APARCAMIENTO 4

PLANTA BAJA

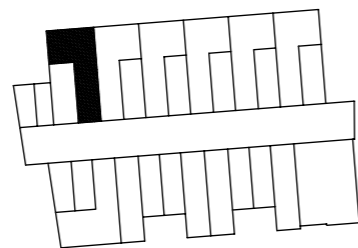


PLANTA ALTA

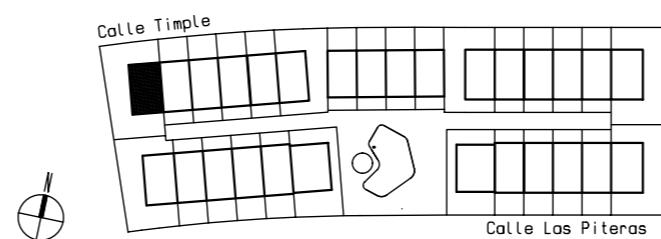


SUPERFICIES CONSTRUIDAS	
PLANTA ALTA	60.54 m ²
PLANTA BAJA	63.95 m ²
PLANTA SÓTANO	62.99 m ²
SUP. CONSTRUIDA TOTAL	187.48 m ²
SUPERFICIES UTILES	
PLANTA ALTA	50.17 m ²
PLANTA BAJA	45.90 m ²
PLANTA SÓTANO	54.04 m ²
SUP. UTIL TOTAL	161.86 m ²

PLANTA GARAJE



URBANIZACION GENERAL



ESPACIOS EXTERIORES	
TERRAZA P. BAJA	70.76 m ²
TERRAZA P. ALTA	19.45 m ²
SOLANA	5.15 m ²
TOTAL E. EXTERIORES	77.24 m ²
SUP. JARDINES APROXIMADO	93.43 m ²
SUP. ACCESO	10.55 m ²