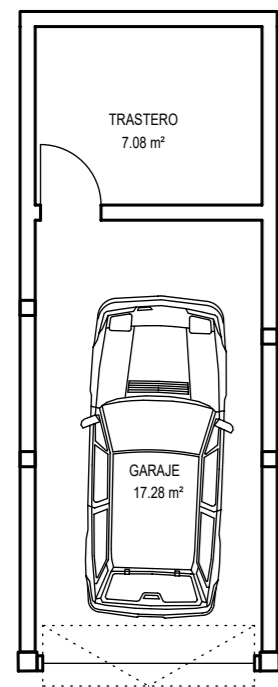


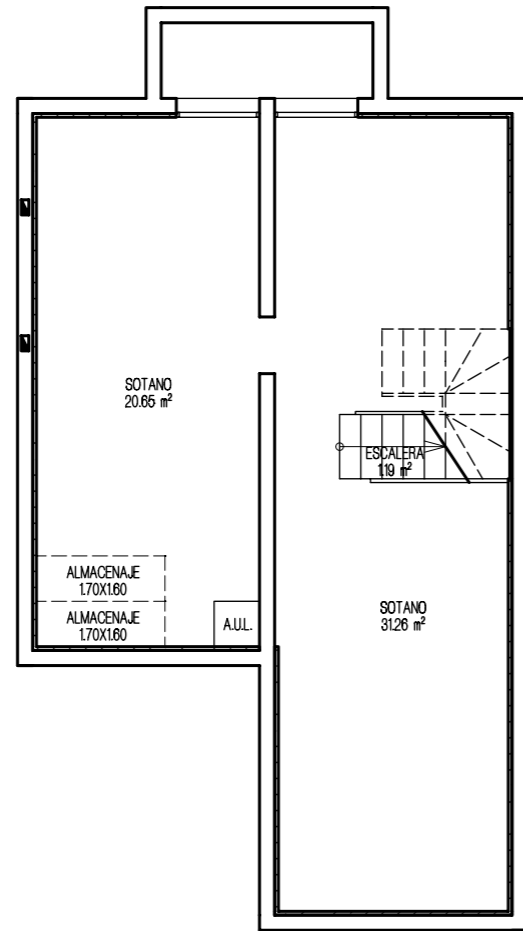
VIVIENDA UNIFAMILIAR 11 - TIPO 3A

PLANTA GARAJE

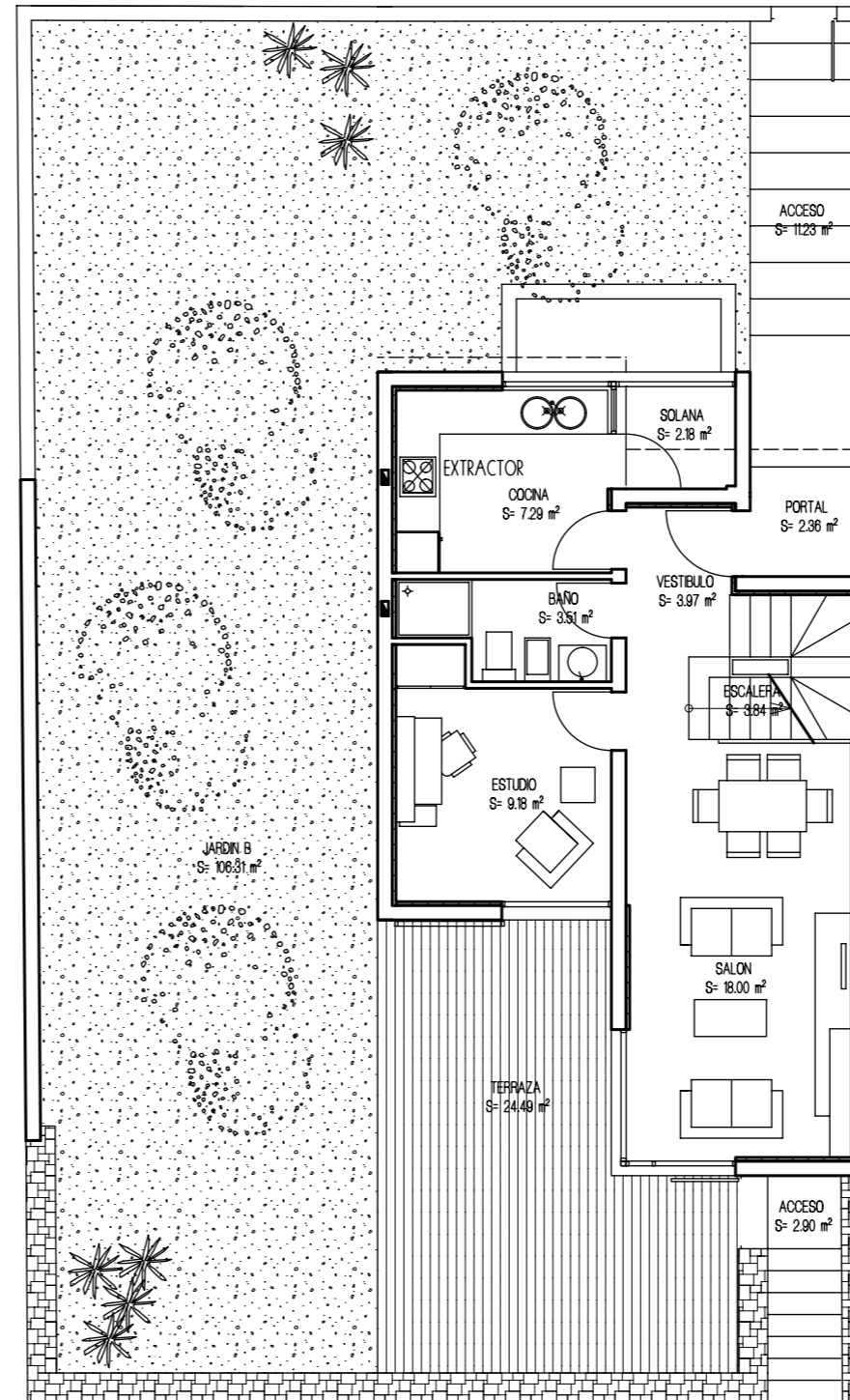


APARCAMIENTO 8

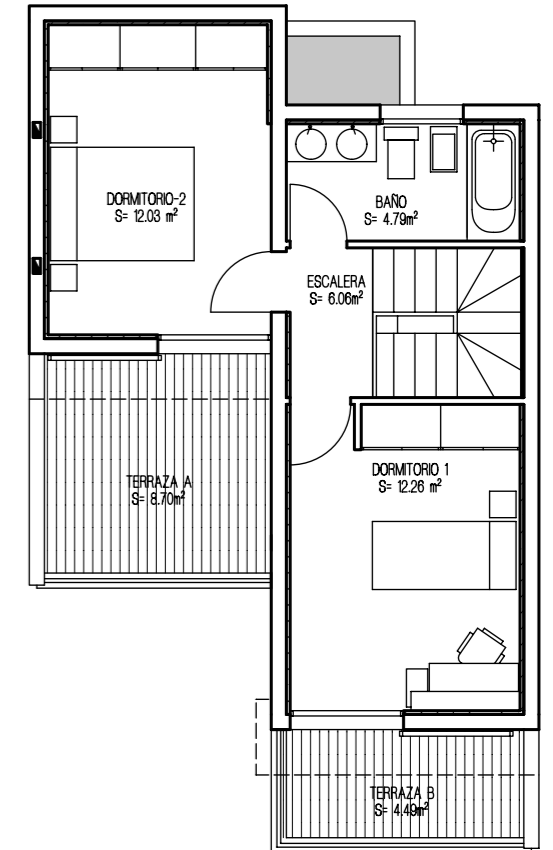
PLANTA SÓTANO



PLANTA BAJA

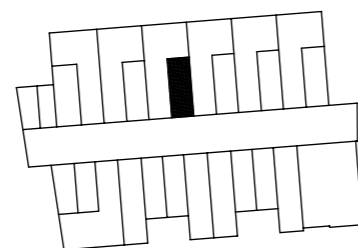


PLANTA ALTA



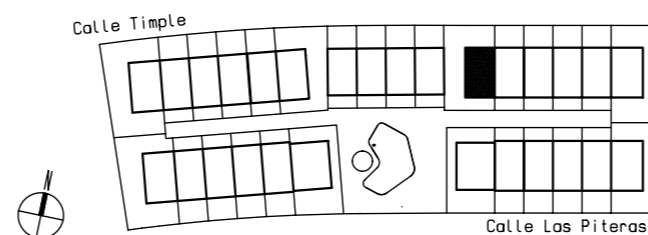
SUPERFICIES CONSTRUIDAS	
PLANTA ALTA	29.49 m ²
PLANTA BAJA	49.74 m ²
PLANTA SÓTANO	60.39 m ²
SUP. CONSTRUIDA TOTAL	139.62 m ²
SUPERFICIES UTILES	
PLANTA ALTA	20.87 m ²
PLANTA BAJA	44.78 m ²
PLANTA SÓTANO	51.12 m ²
SUP. UTIL TOTAL	118.02 m ²

PLANTA GARAJE



SUP. CONSTRUIDA GARAJE: 27.58 m²

URBANIZACION GENERAL



ESPACIOS EXTERIORES	
TERRAZA P. BAJA	24.49 m ²
TERRAZA P. ALTA	13.19 m ²
SOLANA	2.18 m ²
TOTAL E. EXTERIORES	39.86 m ²

SUP. JARDIN APROXIMADO.....106.31 m²