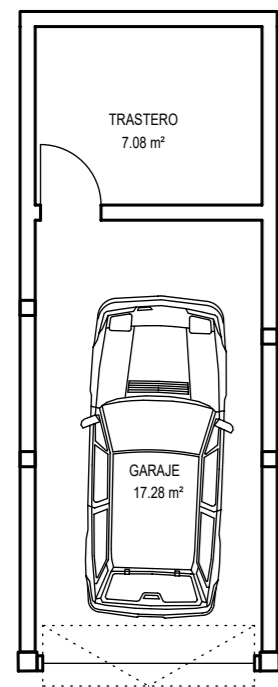


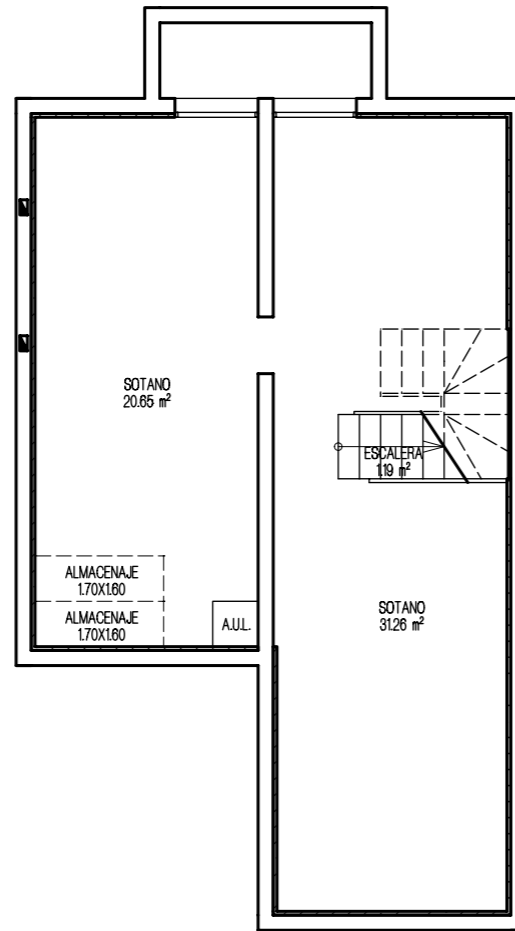
VIVIENDA UNIFAMILIAR 12 - TIPO 3A

PLANTA GARAJE

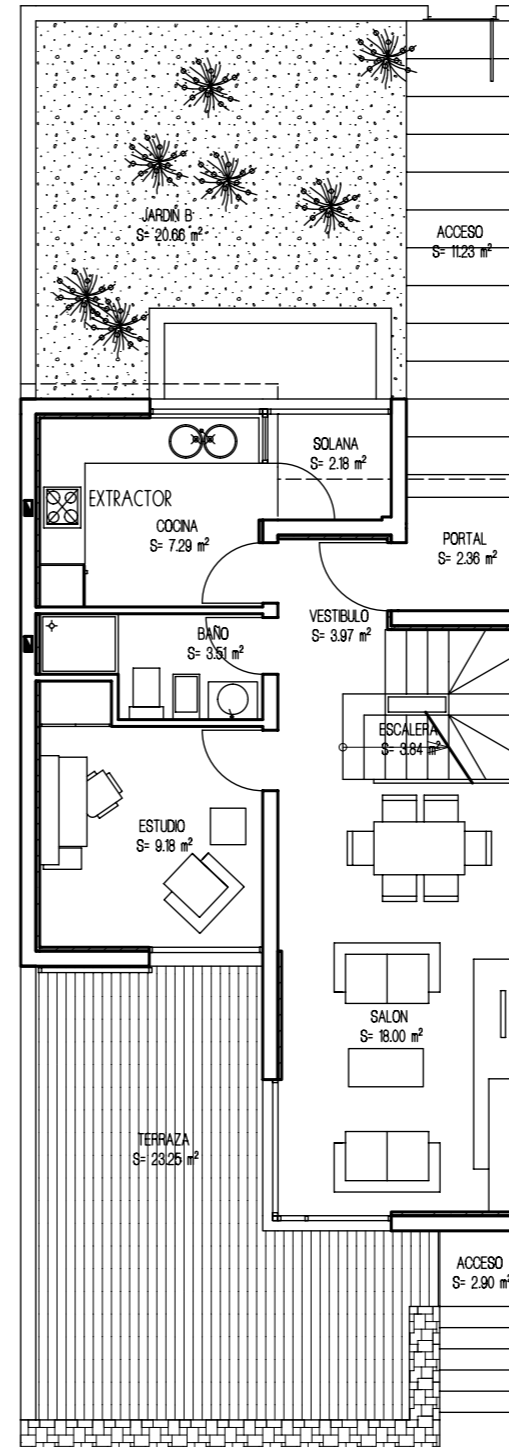


APARCAMIENTO 10

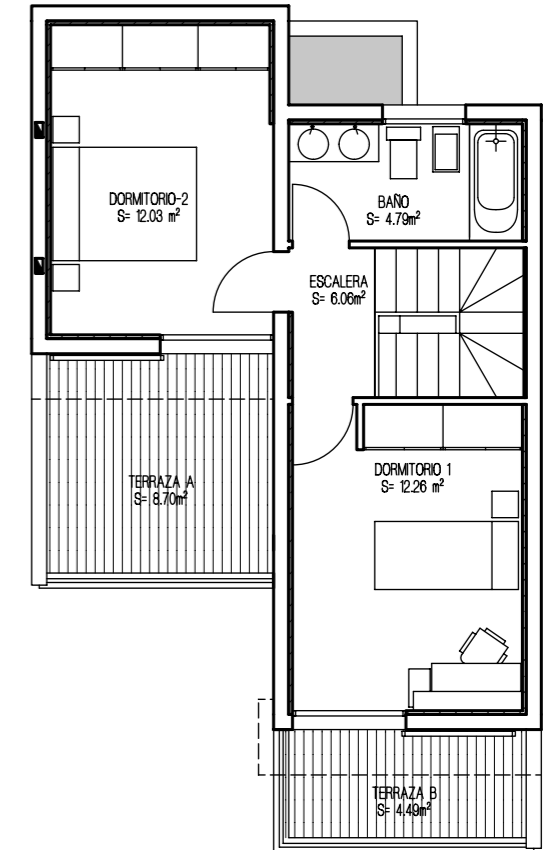
PLANTA SÓTANO



PLANTA BAJA

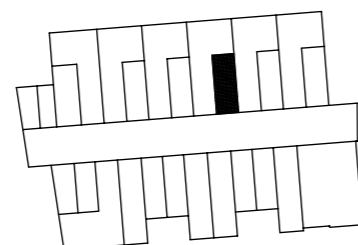


PLANTA ALTA



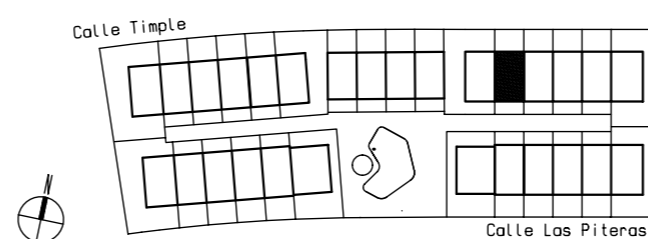
SUPERFICIES CONSTRUIDAS	
PLANTA ALTA	43.06 m ²
PLANTA BAJA	54.80 m ²
PLANTA SÓTANO	61.09 m ²
SUP. CONSTRUIDA TOTAL	158.95 m ²
SUPERFICIES UTILES	
PLANTA ALTA	35.15 m ²
PLANTA BAJA	48.15 m ²
PLANTA SÓTANO	53.10 m ²
SUP. UTIL TOTAL	136.39 m ²

PLANTA GARAJE



SUP. CONSTRUIDA GARAJE: 27.58 m²

URBANIZACION GENERAL



ESPACIOS EXTERIORES	
TERRAZA P. BAJA	23.25 m ²
TERRAZA P. ALTA	13.19 m ²
SOLANA	2.18 m ²
TOTAL E. EXTERIORES	38.62 m ²
SUP. JARDIN APROXIMADO	20.66 m ²