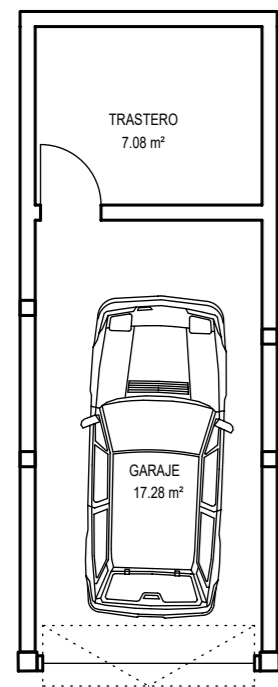


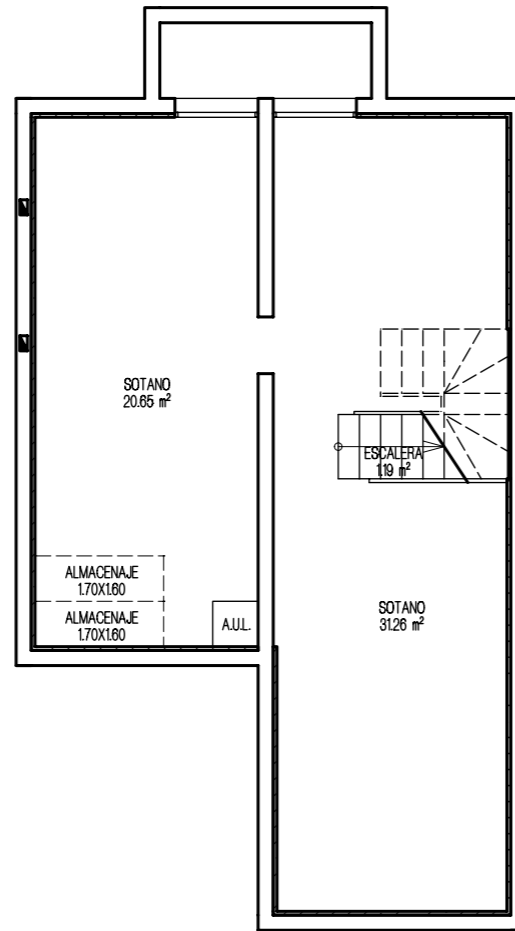
# VIVIENDA UNIFAMILIAR 13 - TIPO 3A

PLANTA GARAJE

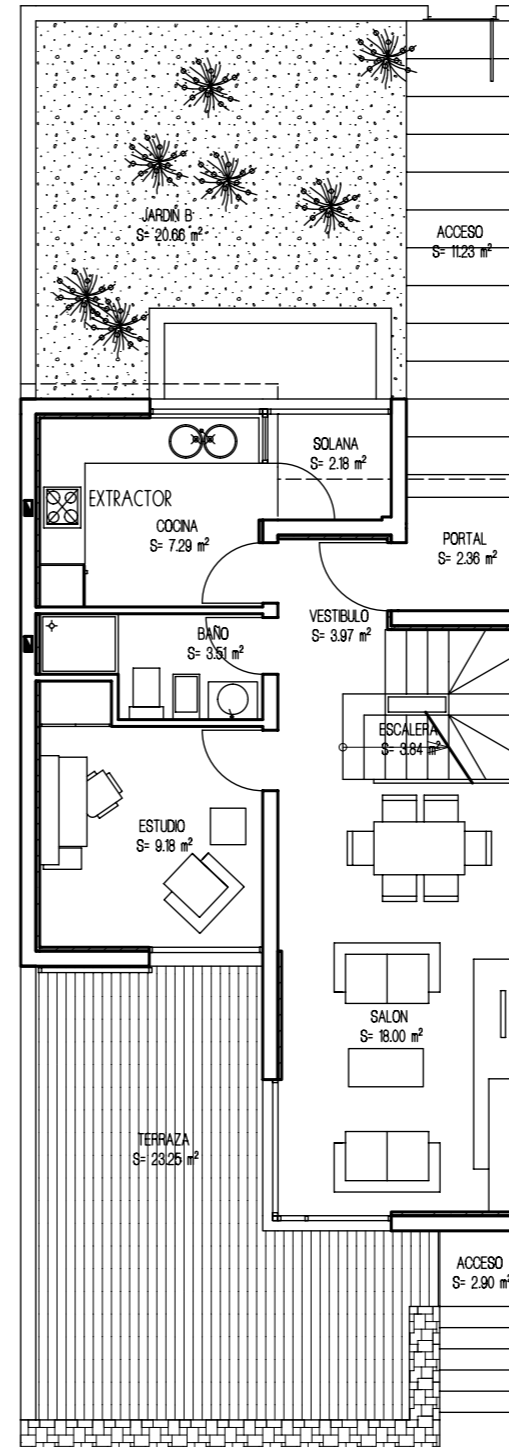


APARCAMIENTO 12

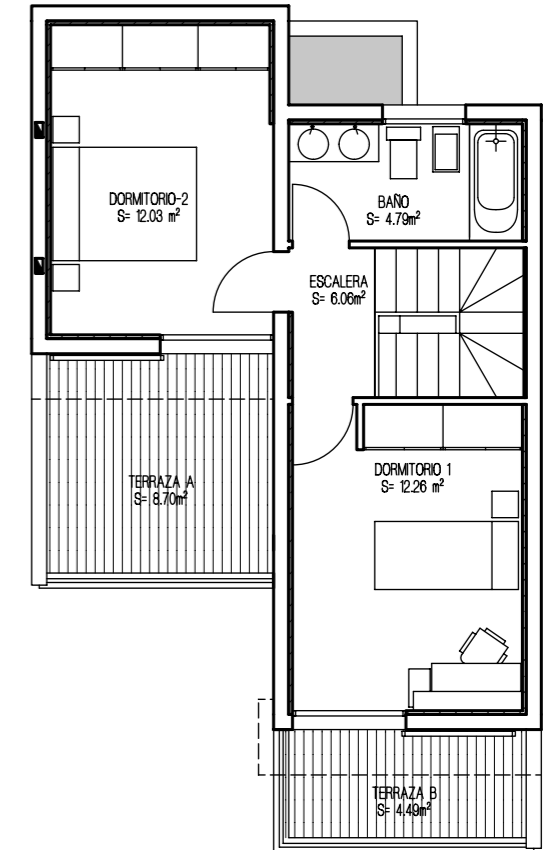
PLANTA SÓTANO



PLANTA BAJA

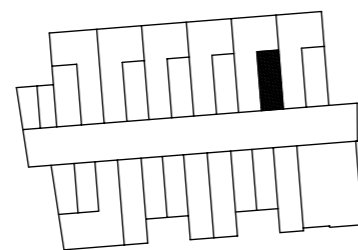


PLANTA ALTA



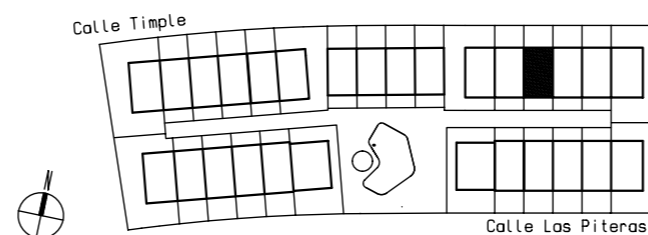
SUPERFICIES CONSTRUIDAS	
PLANTA ALTA	43.06 m <sup>2</sup>
PLANTA BAJA	54.80 m <sup>2</sup>
PLANTA SÓTANO	61.09 m <sup>2</sup>
SUP. CONSTRUIDA TOTAL	158.95 m <sup>2</sup>
SUPERFICIES UTILES	
PLANTA ALTA	35.15 m <sup>2</sup>
PLANTA BAJA	48.15 m <sup>2</sup>
PLANTA SÓTANO	53.10 m <sup>2</sup>
SUP. UTIL TOTAL	136.39 m <sup>2</sup>

PLANTA GARAJE



SUP. CONSTRUIDA GARAJE: 27.58 m<sup>2</sup>

URBANIZACION GENERAL



ESPACIOS EXTERIORES	
TERRAZA P. BAJA	23.25 m <sup>2</sup>
TERRAZA P. ALTA	13.19 m <sup>2</sup>
SOLANA	2.18 m <sup>2</sup>
TOTAL E. EXTERIORES	38.62 m <sup>2</sup>
SUP. JARDIN APROXIMADO	20.66 m <sup>2</sup>