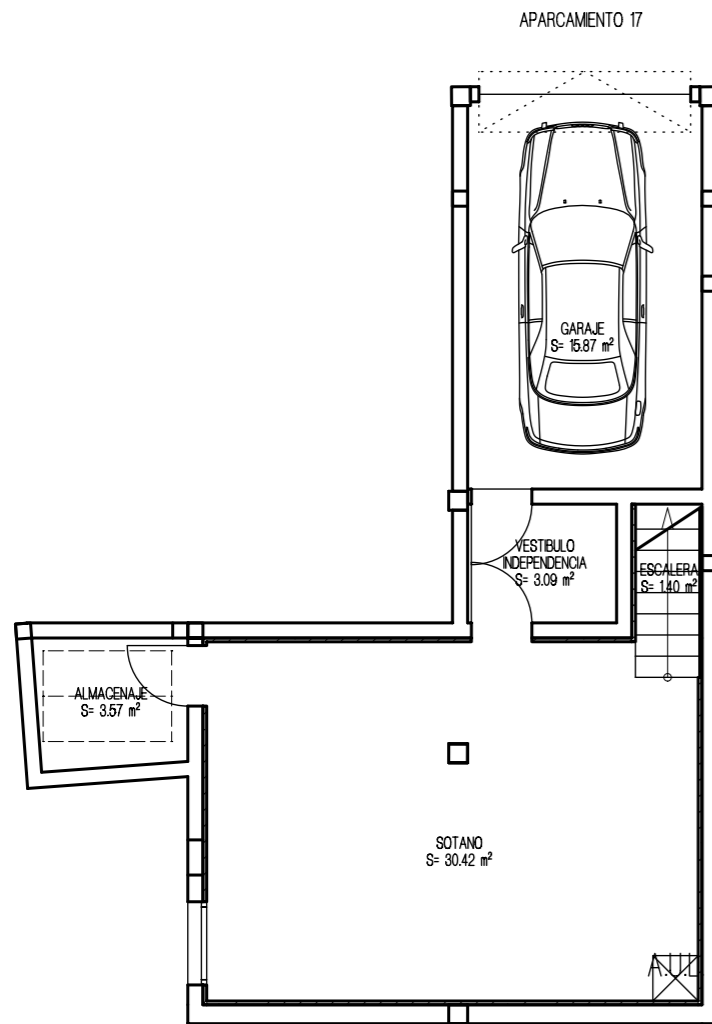
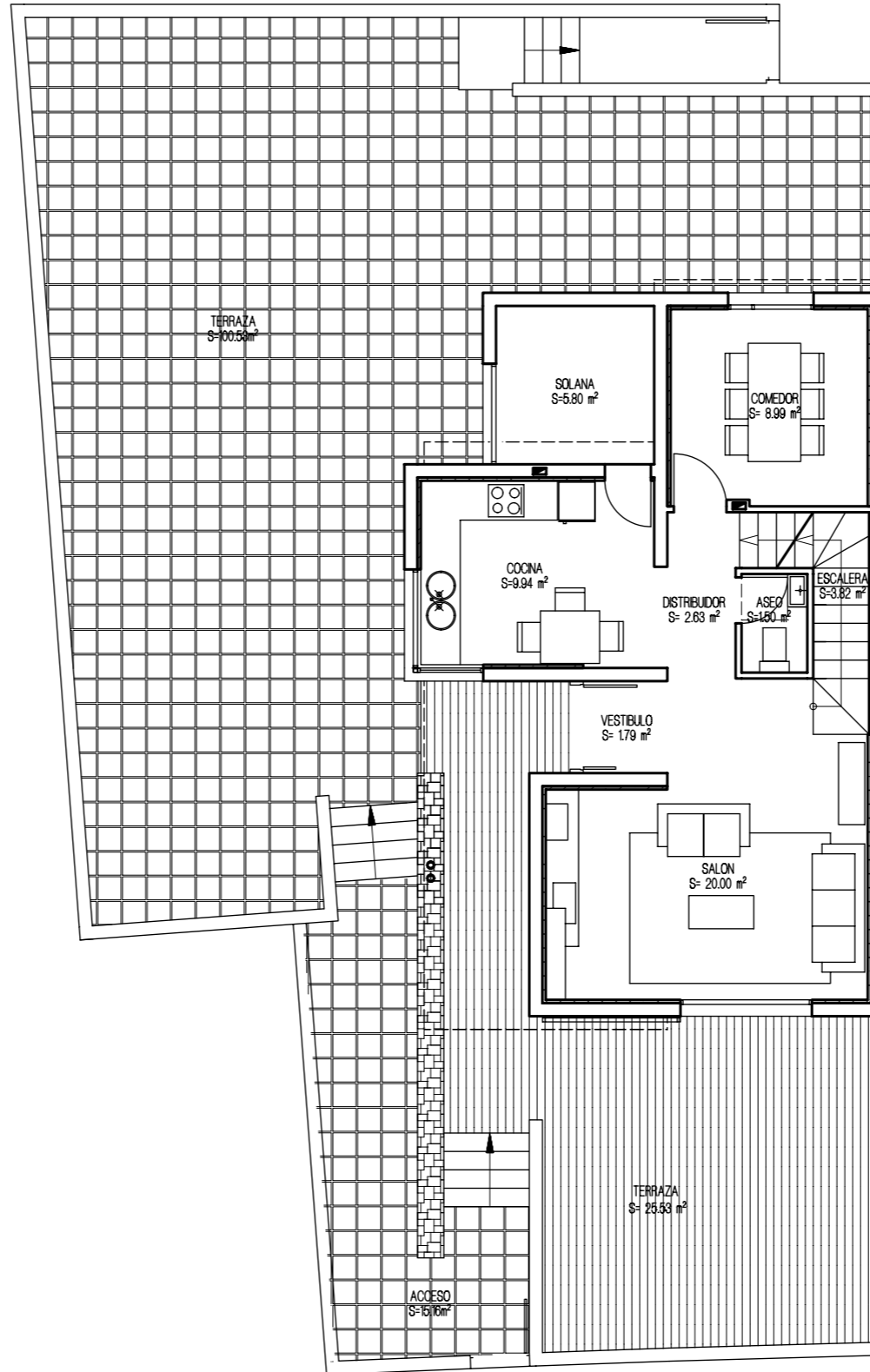


# VIVIENDA UNIFAMILIAR 17 - TIPO 4B'

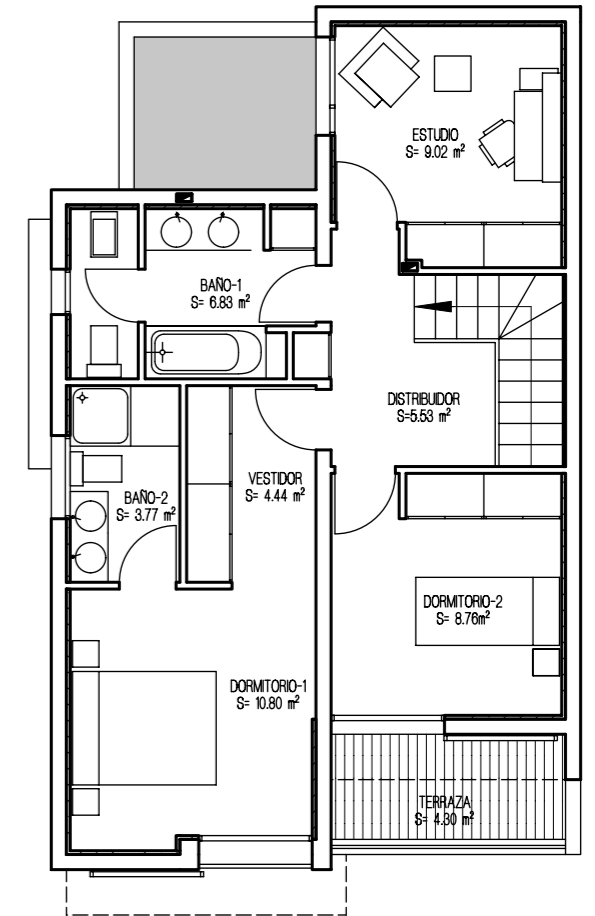
PLANTA GARAJE



PLANTA BAJA

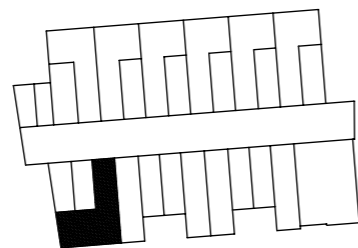


PLANTA ALTA

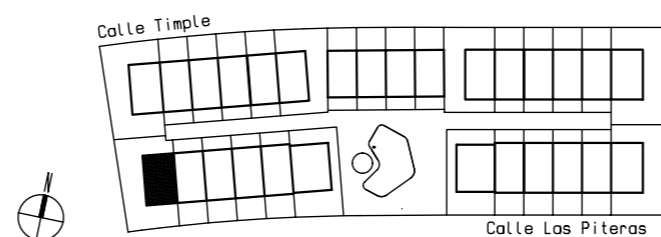


SUPERFICIES CONSTRUIDAS	
PLANTA ALTA	62.53 m <sup>2</sup>
PLANTA BAJA	65.69 m <sup>2</sup>
PLANTA SÓTANO	70.43 m <sup>2</sup>
SUP. CONSTRUIDA TOTAL	198.65 m <sup>2</sup>
SUPERFICIES UTILES	
PLANTA ALTA	49.15 m <sup>2</sup>
PLANTA BAJA	56.82 m <sup>2</sup>
PLANTA SÓTANO	54.35 m <sup>2</sup>
SUP. UTIL TOTAL	160.32 m <sup>2</sup>

PLANTA GARAJE



URBANIZACION GENERAL



ESPACIOS EXTERIORES	
TERRAZA P. BAJA	126.06 m <sup>2</sup>
TERRAZA P. ALTA	4.30 m <sup>2</sup>
SOLANA	5.80 m <sup>2</sup>
TOTAL E. EXTERIORES	136.16 m <sup>2</sup>