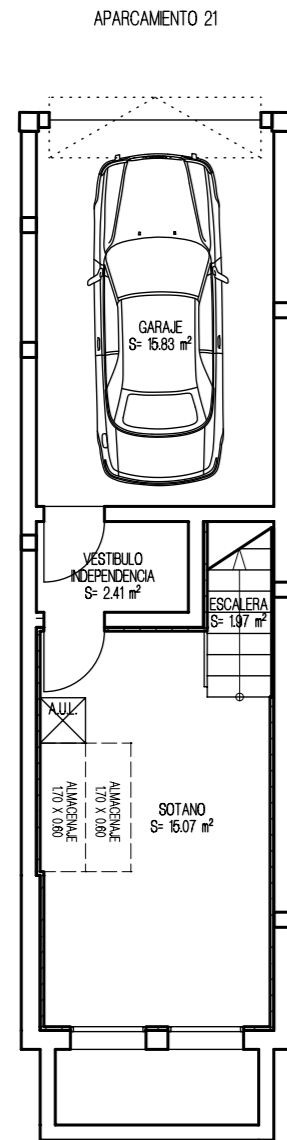
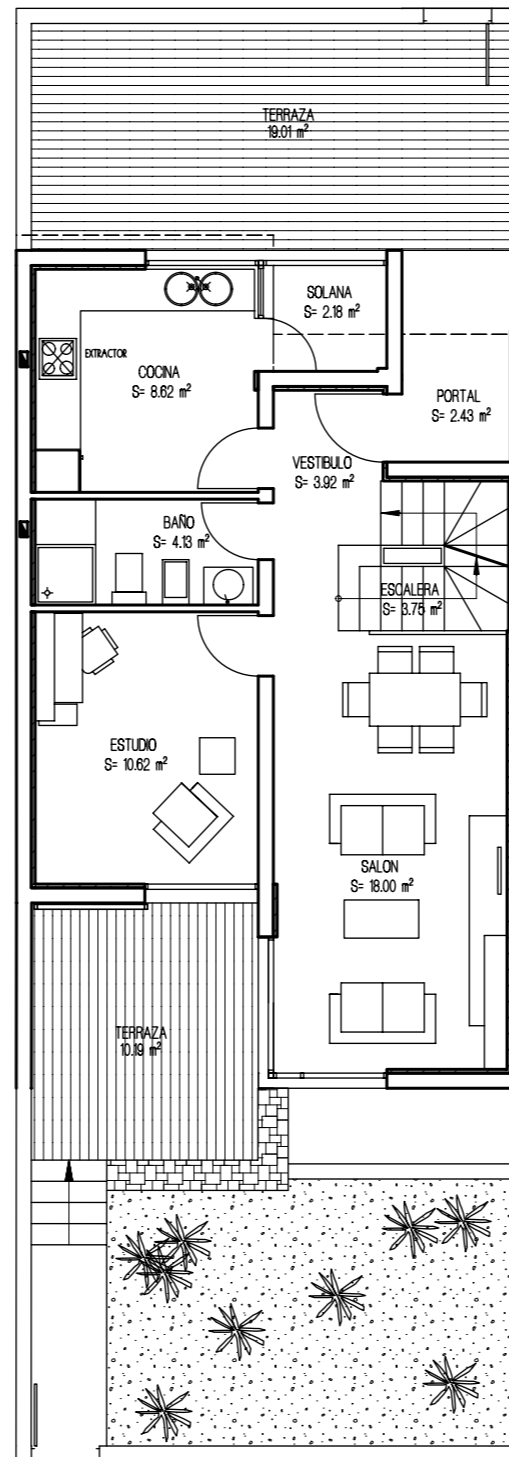


# VIVIENDA UNIFAMILIAR 19 - TIPO 3B'

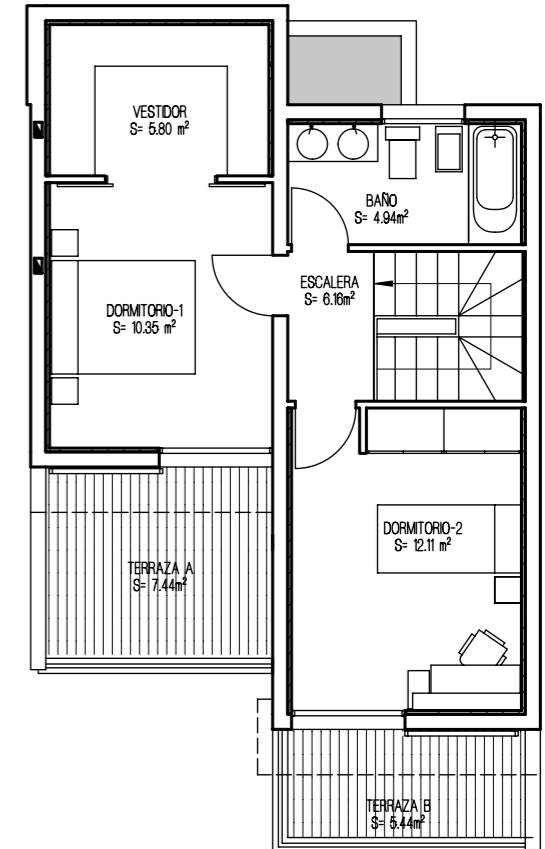
PLANTA GARAJE



PLANTA BAJA

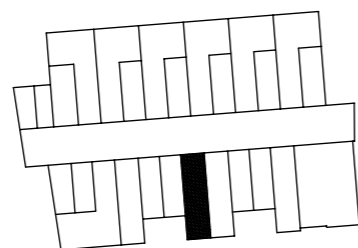


PLANTA ALTA

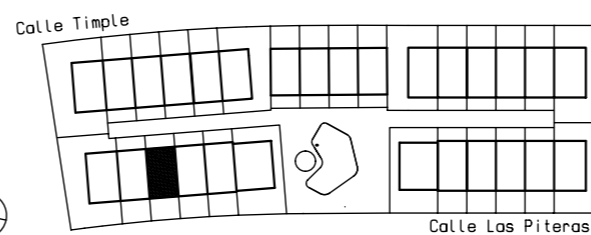


SUPERFICIES CONSTRUIDAS	
PLANTA ALTA	47.28 m <sup>2</sup>
PLANTA BAJA	58.92 m <sup>2</sup>
PLANTA SÓTANO	41.74 m <sup>2</sup>
SUP. CONSTRUIDA TOTAL	147.94 m <sup>2</sup>
SUPERFICIES UTILES	
PLANTA ALTA	39.36 m <sup>2</sup>
PLANTA BAJA	45.90 m <sup>2</sup>
PLANTA SÓTANO	35.22 m <sup>2</sup>
SUP. UTIL TOTAL	120.48 m <sup>2</sup>

PLANTA GARAJE



URBANIZACION GENERAL



ESPACIOS EXTERIORES	
TERRAZA P. BAJA	29.20 m <sup>2</sup>
TERRAZA P. ALTA	18.88 m <sup>2</sup>
SOLANA	2.18 m <sup>2</sup>
TOTAL E. EXTERIORES	42.97 m <sup>2</sup>
SUP. JARDIN APROXIMADO	18.50 m <sup>2</sup>