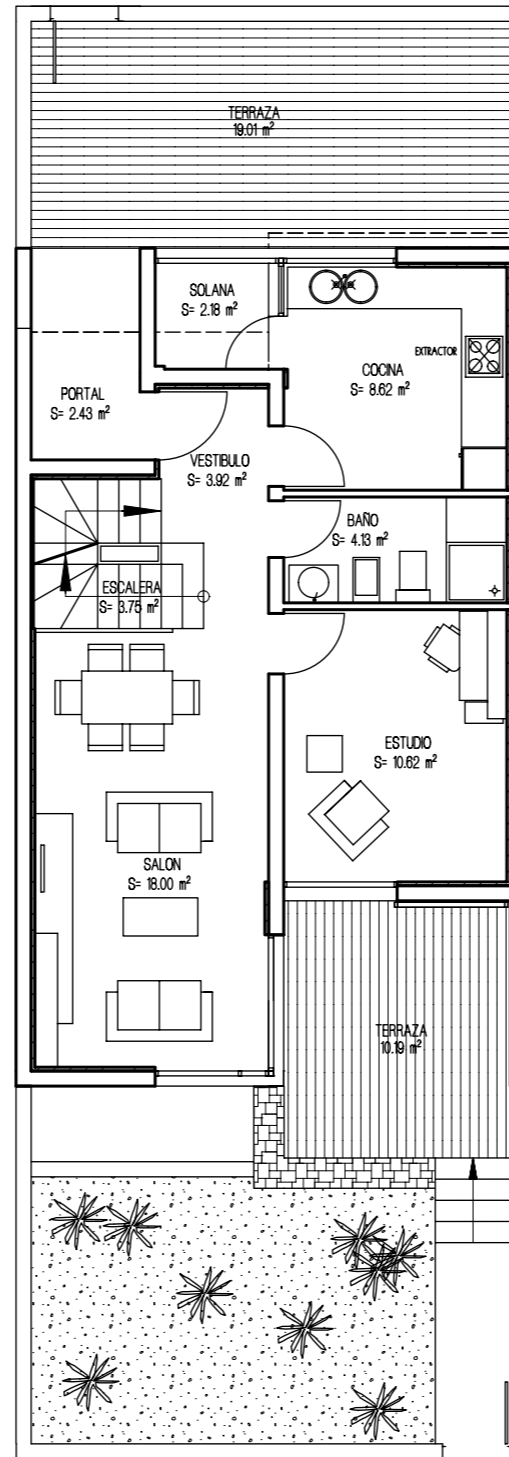


VIVIENDA UNIFAMILIAR 20 - TIPO 3B'

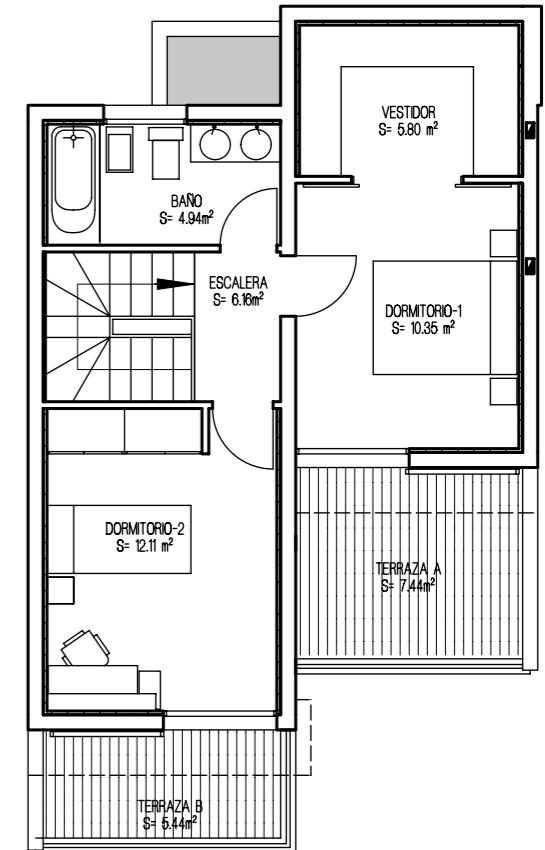
PLANTA GARAJE



PLANTA BAJA

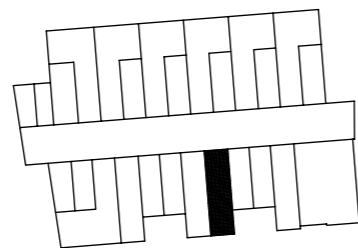


PLANTA ALTA

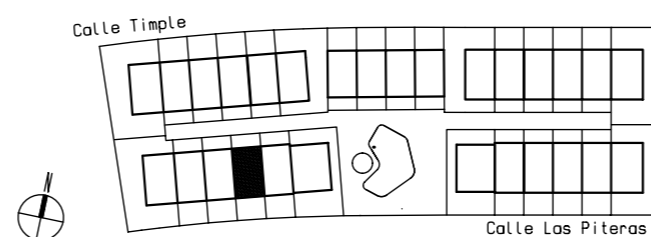


SUPERFICIES CONSTRUIDAS	
PLANTA ALTA	47.28 m ²
PLANTA BAJA	58.92 m ²
PLANTA SÓTANO	41.74 m ²
SUP. CONSTRUIDA TOTAL	147.94 m ²
SUPERFICIES UTILES	
PLANTA ALTA	39.36 m ²
PLANTA BAJA	45.90 m ²
PLANTA SÓTANO	35.22 m ²
SUP. UTIL TOTAL	120.48 m ²

PLANTA GARAJE



URBANIZACION GENERAL



ESPACIOS EXTERIORES	
TERRAZA P. BAJA	29.20 m ²
TERRAZA P. ALTA	18.88 m ²
SOLANA	2.18 m ²
TOTAL E. EXTERIORES	42.97 m ²
SUP. JARDIN APROXIMADO	18.50 m ²