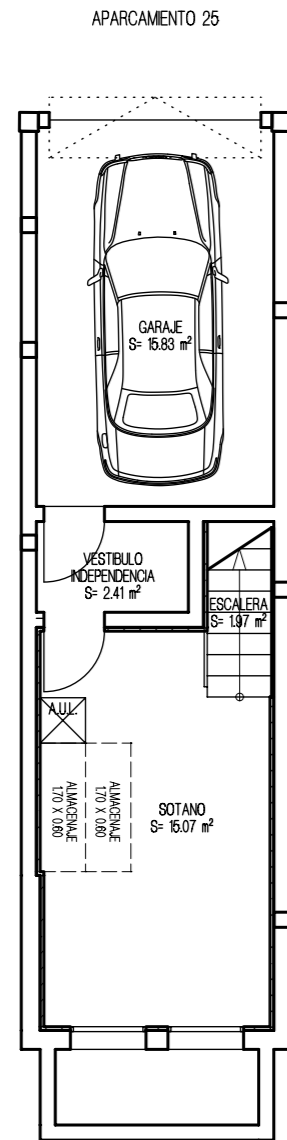
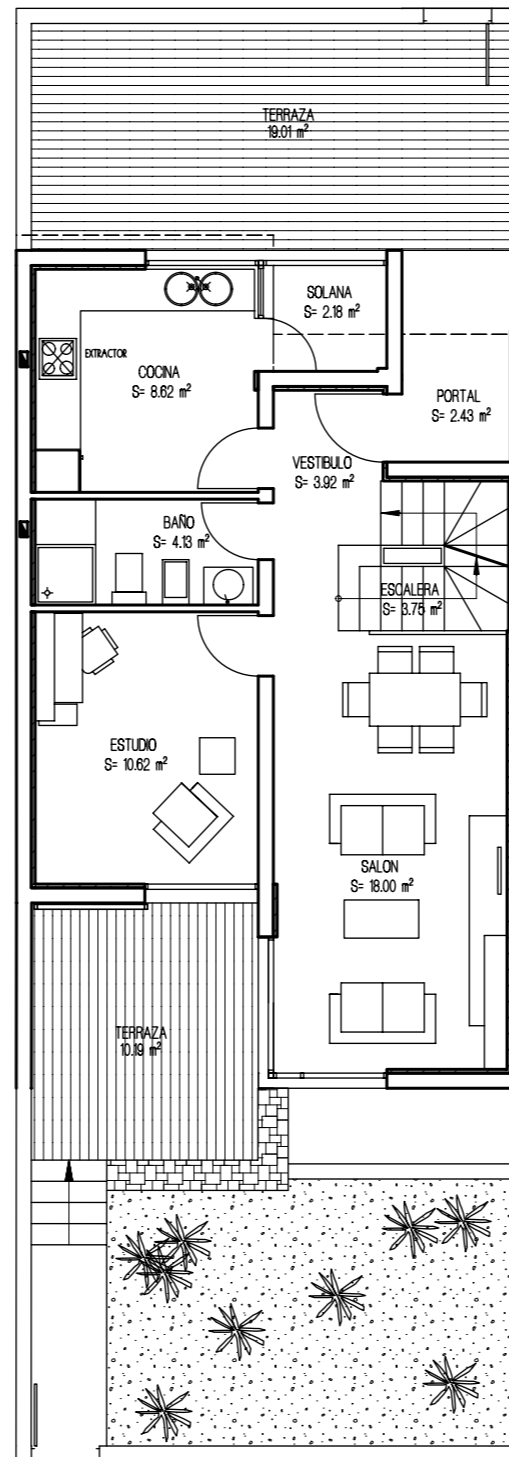


# VIVIENDA UNIFAMILIAR 21 - TIPO 3B'

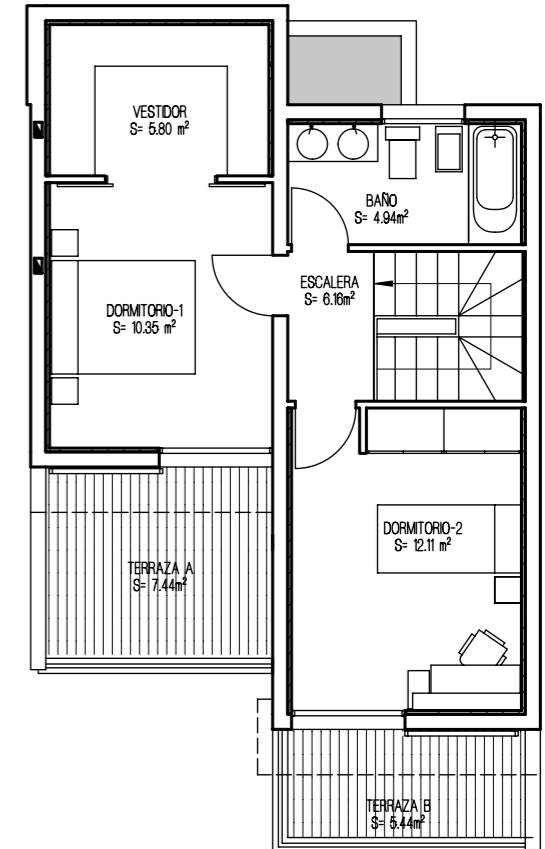
PLANTA GARAJE



PLANTA BAJA

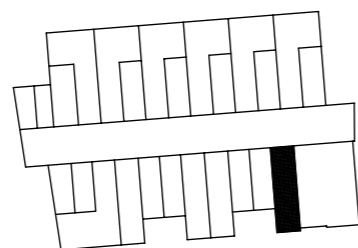


PLANTA ALTA

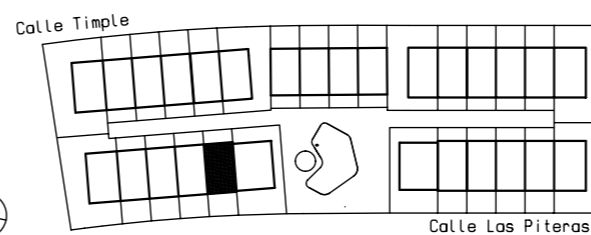


| SUPERFICIES CONSTRUIDAS |                       |
|-------------------------|-----------------------|
| PLANTA ALTA             | 47.28 m <sup>2</sup>  |
| PLANTA BAJA             | 58.92 m <sup>2</sup>  |
| PLANTA SÓTANO           | 41.74 m <sup>2</sup>  |
| SUP. CONSTRUIDA TOTAL   | 147.94 m <sup>2</sup> |
| SUPERFICIES UTILES      |                       |
| PLANTA ALTA             | 39.36 m <sup>2</sup>  |
| PLANTA BAJA             | 45.90 m <sup>2</sup>  |
| PLANTA SÓTANO           | 35.22 m <sup>2</sup>  |
| SUP. UTIL TOTAL         | 120.48 m <sup>2</sup> |

PLANTA GARAJE



URBANIZACION GENERAL



| ESPACIOS EXTERIORES    |                      |
|------------------------|----------------------|
| TERRAZA P. BAJA        | 29.20 m <sup>2</sup> |
| TERRAZA P. ALTA        | 18.88 m <sup>2</sup> |
| SOLANA                 | 2.18 m <sup>2</sup>  |
| TOTAL E. EXTERIORES    | 42.97 m <sup>2</sup> |
| SUP. JARDIN APROXIMADO | 18.50 m <sup>2</sup> |