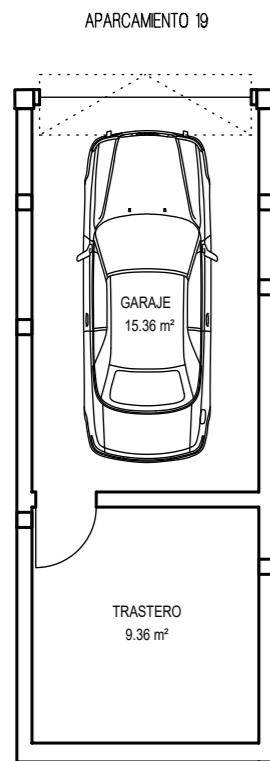
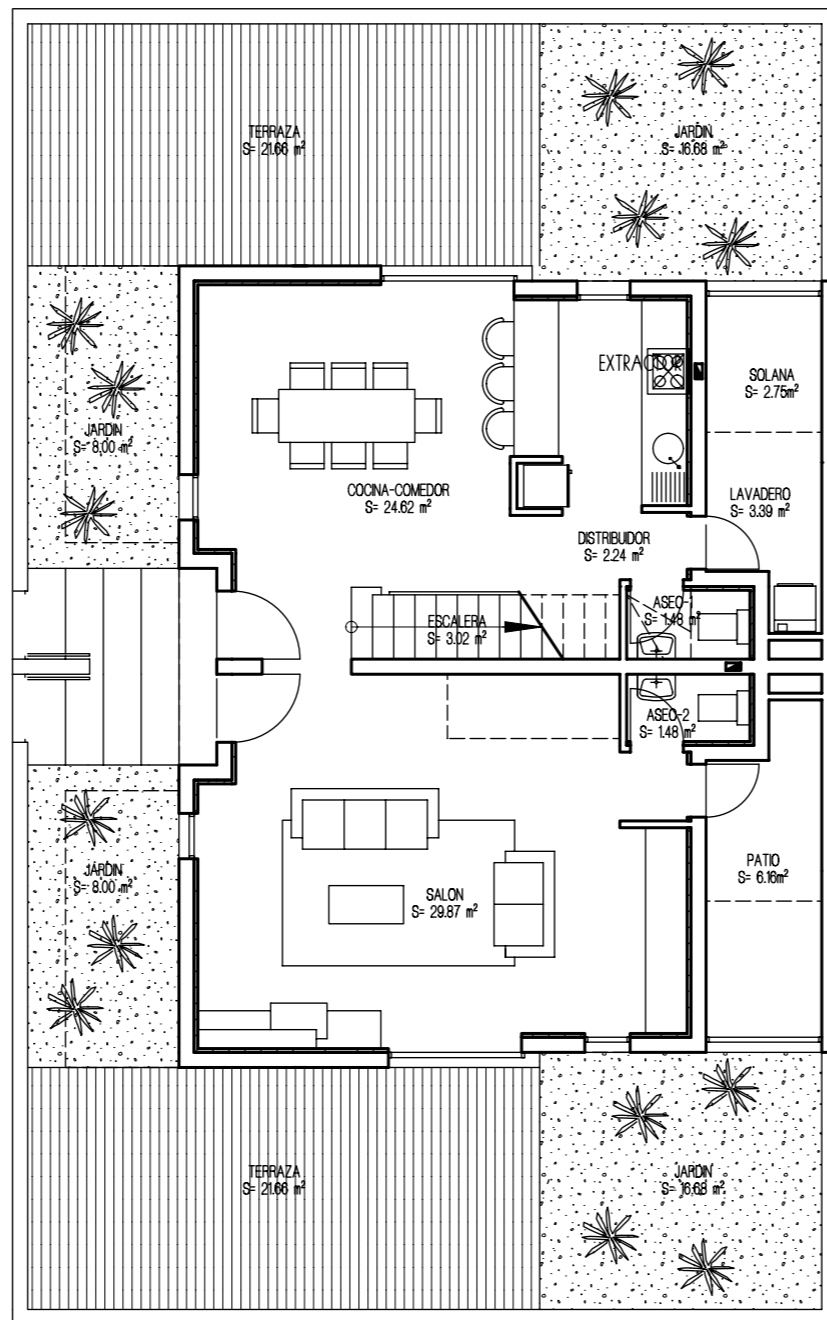


# VIVIENDA UNIFAMILIAR 23 - TIPO 2B

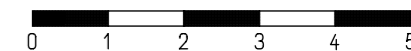
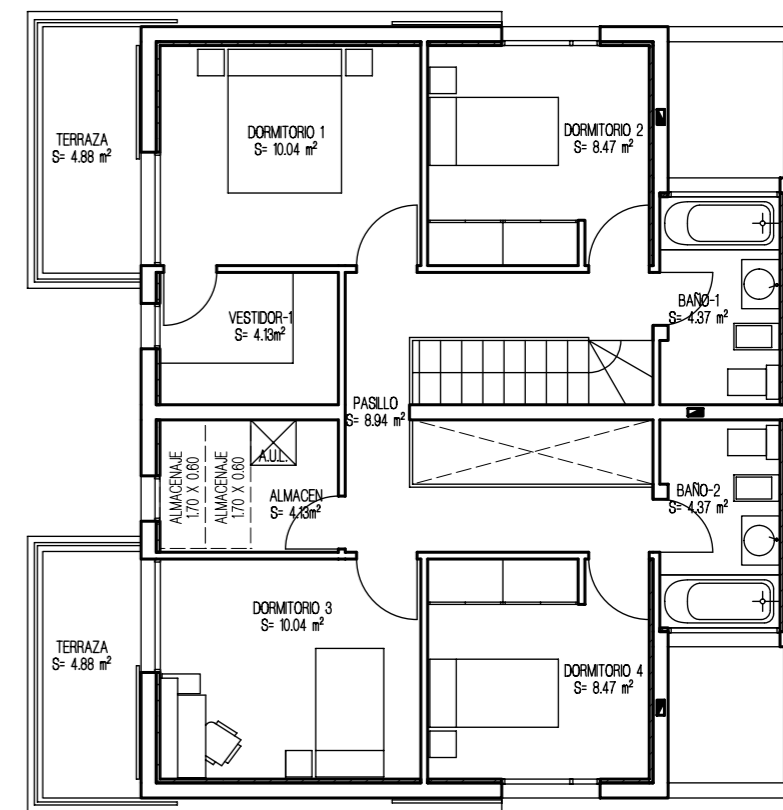
## PLANTA GARAJE



## PLANTA BAJA



## PLANTA ALTA

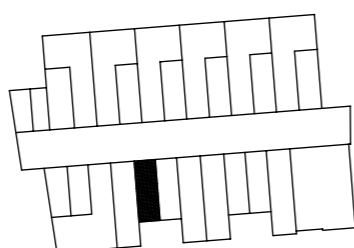


SUPERFICIES CONSTRUIDAS	
PLANTA ALTA	76.32 m <sup>2</sup>
PLANTA BAJA	81.81 m <sup>2</sup>
<b>SUP. CONSTRUIDA TOTAL</b>	<b>158.13 m<sup>2</sup></b>

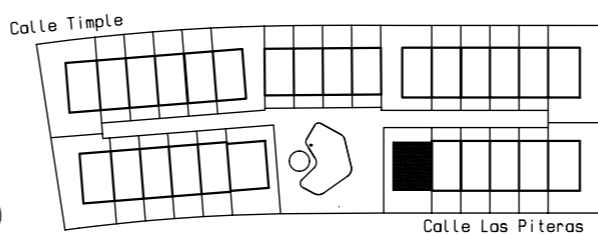
SUPERFICIES UTILES	
PLANTA ALTA	62.96 m <sup>2</sup>
PLANTA BAJA	69.49 m <sup>2</sup>
<b>SUP. UTIL TOTAL</b>	<b>125.67 m<sup>2</sup></b>

PLANTA GARAJE



SUP. CONSTRUIDA GARAJE: 28.44 m<sup>2</sup>

URBANIZACION GENERAL



ESPACIOS EXTERIORES	
TERRAZA P. BAJA	43.32 m <sup>2</sup>
TERRAZA P. ALTA	9.76 m <sup>2</sup>
SOLANA	2.75 m <sup>2</sup>
PATIO	6.16 m <sup>2</sup>
<b>TOTAL E. EXTERIORES</b>	<b>61.99 m<sup>2</sup></b>

SUP. JARDIN APROXIMADO.....49.36 m<sup>2</sup>