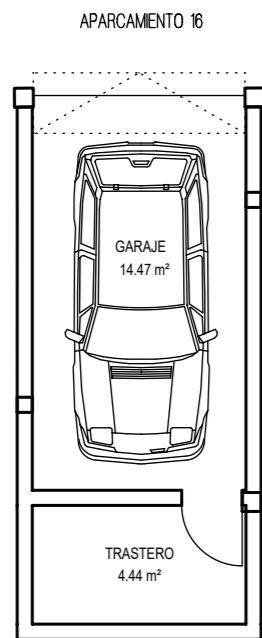
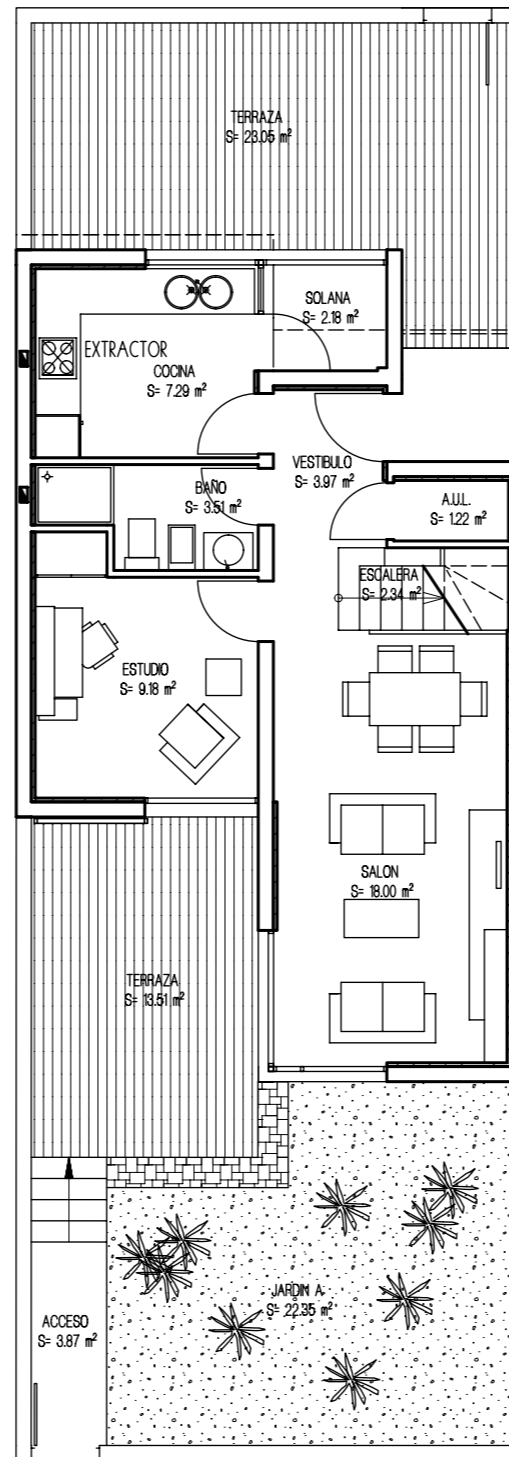


# VIVIENDA UNIFAMILIAR 25 - TIPO 3B

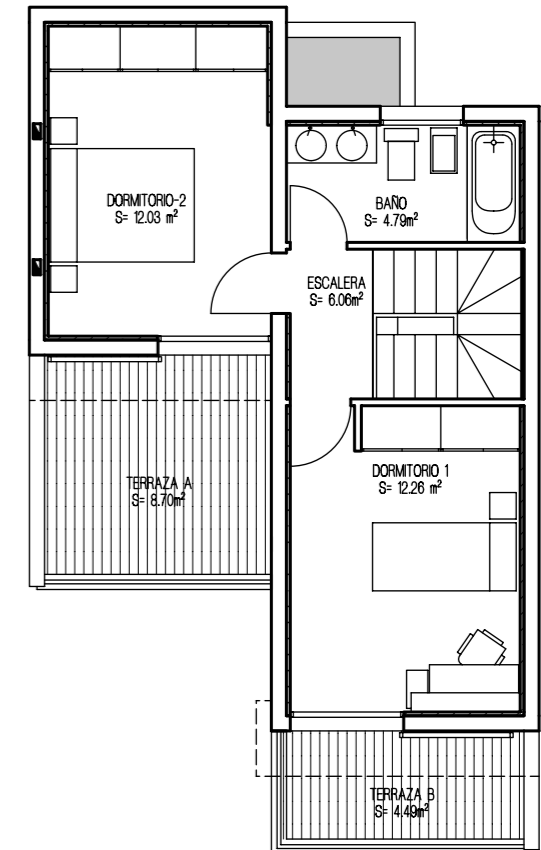
PLANTA GARAJE



PLANTA BAJA

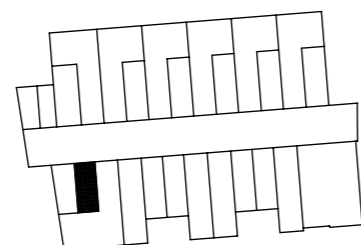


PLANTA ALTA

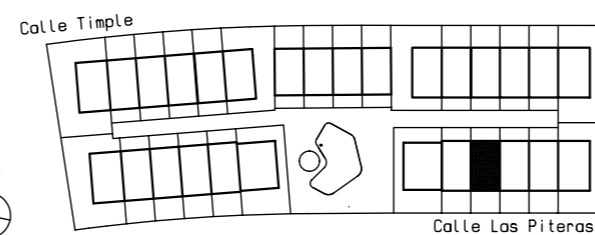


SUPERFICIES CONSTRUIDAS	
PLANTA ALTA	40.95 m <sup>2</sup>
PLANTA BAJA	54.60 m <sup>2</sup>
SUP. CONSTRUIDA TOTAL	95.55 m <sup>2</sup>
SUPERFICIES UTILES	
PLANTA ALTA	35.14 m <sup>2</sup>
PLANTA BAJA	45.80 m <sup>2</sup>
SUP. UTIL TOTAL	80.94 m <sup>2</sup>

PLANTA GARAJE



URBANIZACION GENERAL



ESPACIOS EXTERIORES	
TERRAZA P. BAJA	35.56 m <sup>2</sup>
TERRAZA P. ALTA	13.19 m <sup>2</sup>
SOLANA	2.18 m <sup>2</sup>
TOTAL E. EXTERIORES	61.99 m <sup>2</sup>

SUP. JARDIN APROXIMADO.....22.35 m<sup>2</sup>