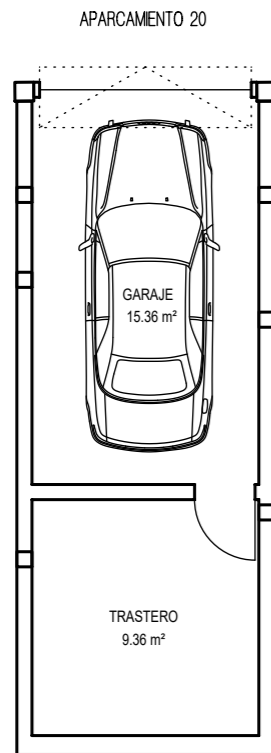
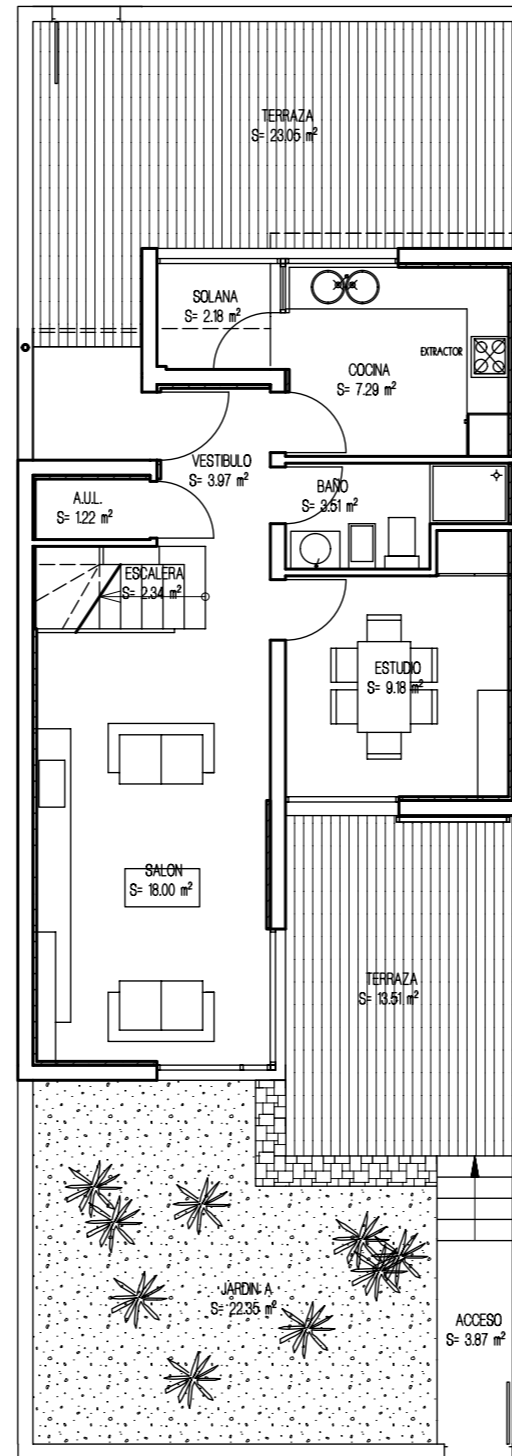


VIVIENDA UNIFAMILIAR 26 - TIPO 3B

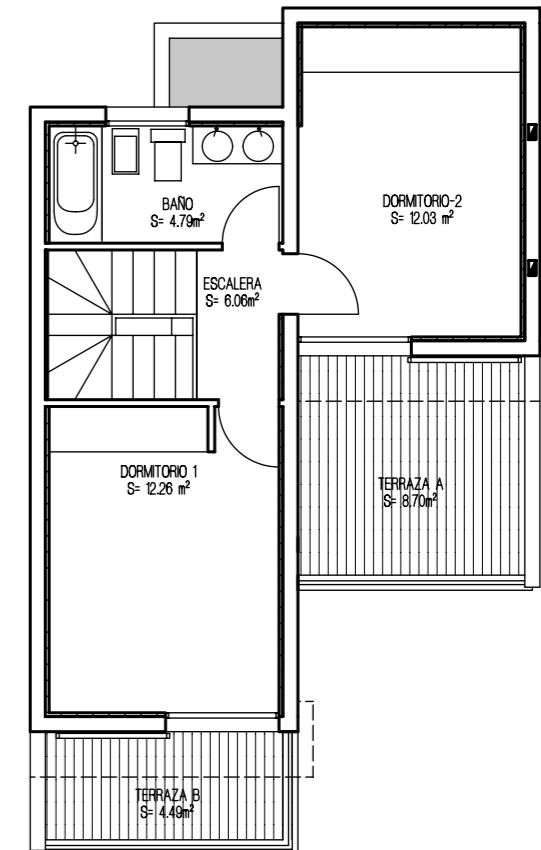
PLANTA GARAJE



PLANTA BAJA

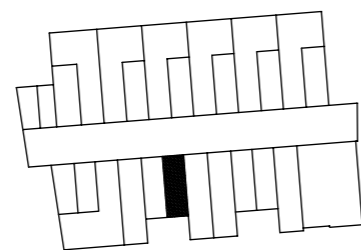


PLANTA ALTA



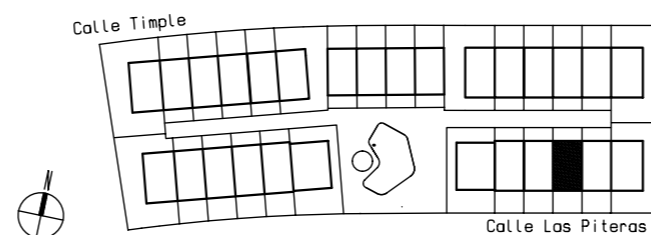
SUPERFICIES CONSTRUIDAS	
PLANTA ALTA	40.95 m ²
PLANTA BAJA	54.60 m ²
SUP. CONSTRUIDA TOTAL	95.55 m ²
SUPERFICIES UTILES	
PLANTA ALTA	35.14 m ²
PLANTA BAJA	45.80 m ²
SUP. UTIL TOTAL	80.94 m ²

PLANTA GARAJE



SUP. CONSTRUIDA GARAJE: 28.44 m²

URBANIZACION GENERAL



ESPACIOS EXTERIORES	
TERRAZA P. BAJA	35.56 m ²
TERRAZA P. ALTA	13.19 m ²
SOLANA	2.18 m ²
TOTAL E. EXTERIORES	61.99 m ²

SUP. JARDIN APROXIMADO.....22.35 m²