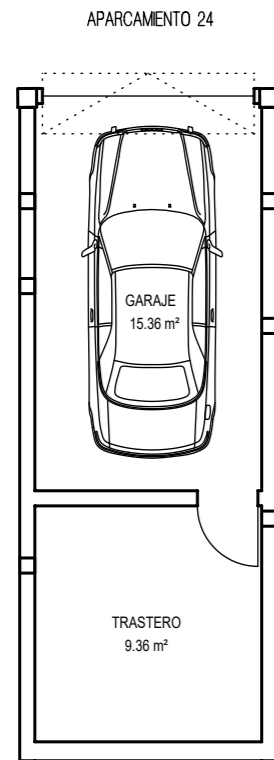
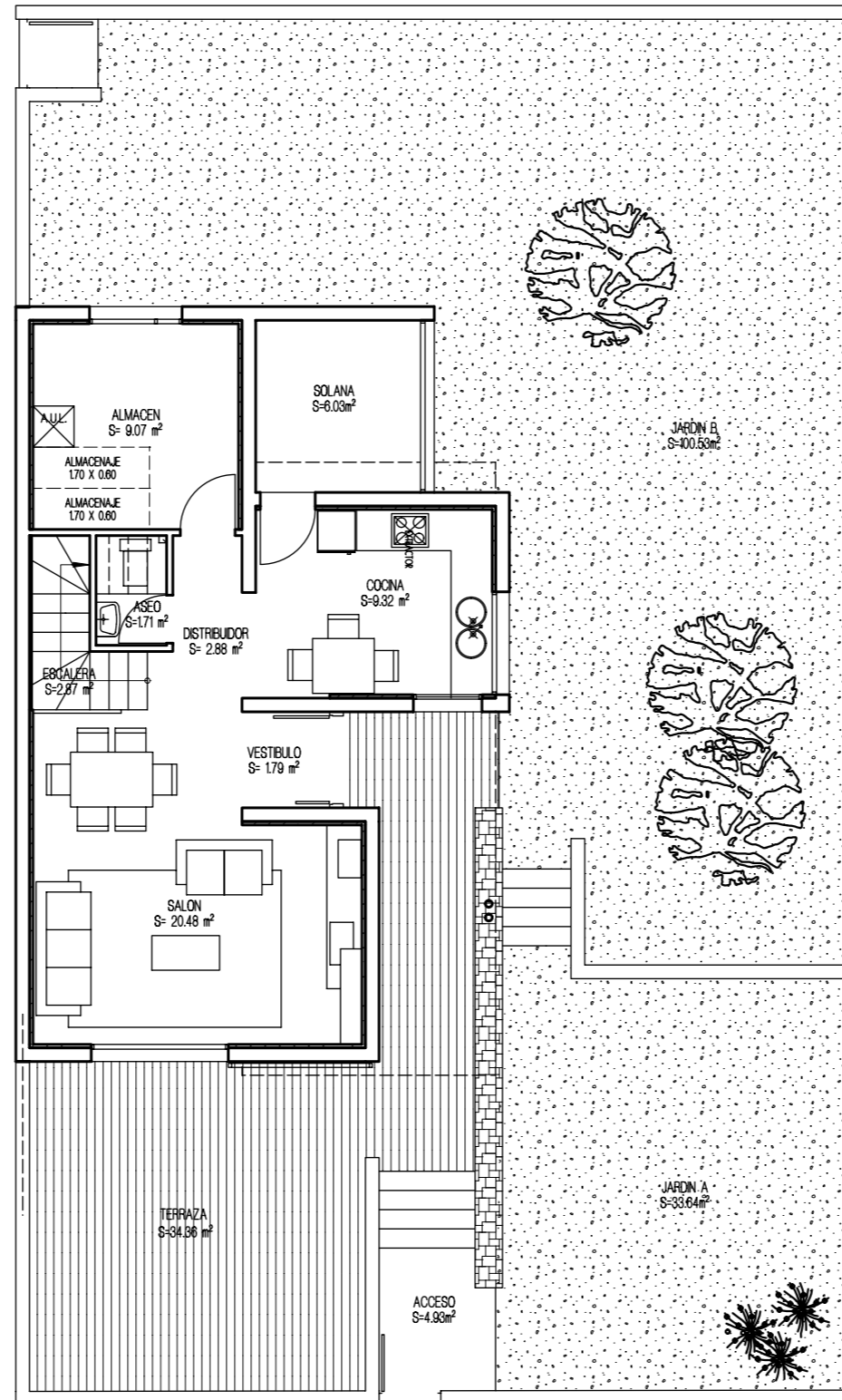


VIVIENDA UNIFAMILIAR 28 - TIPO 4B

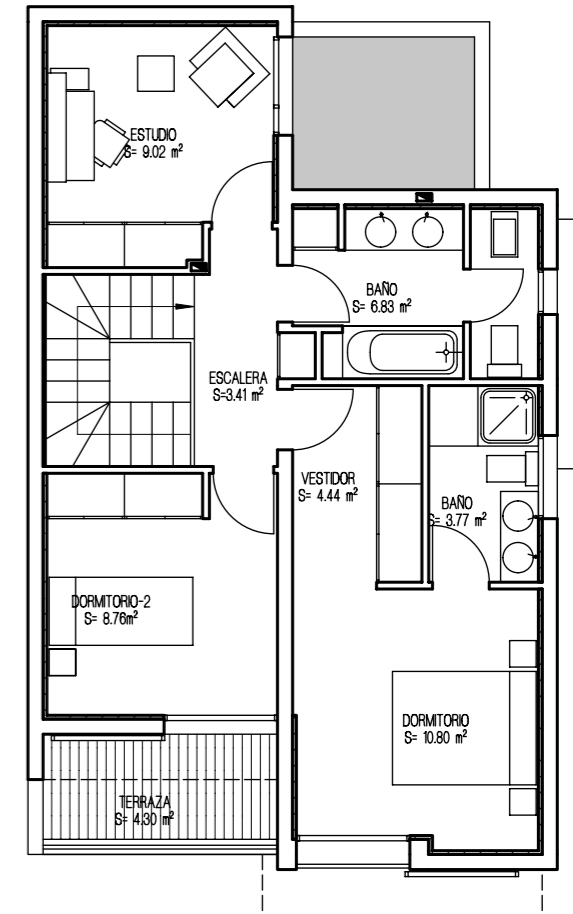
PLANTA GARAJE



PLANTA BAJA

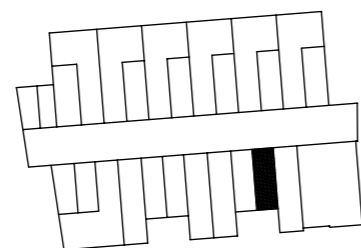


PLANTA ALTA

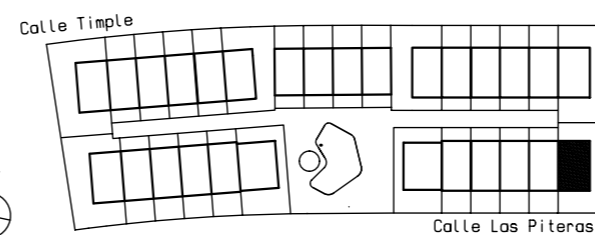


SUPERFICIES CONSTRUIDAS	
PLANTA ALTA	61.46 m ²
PLANTA BAJA	65.69 m ²
SUP. CONSTRUIDA TOTAL	127.15 m ²
SUPERFICIES UTILES	
PLANTA ALTA	47.03 m ²
PLANTA BAJA	56.27 m ²
SUP. UTIL TOTAL	92.09 m ²

PLANTA GARAJE



URBANIZACION GENERAL



ESPACIOS EXTERIORES	
TERRAZA P. BAJA	34.36 m ²
TERRAZA P. ALTA	4.30 m ²
SOLANA	6.03 m ²
TOTAL E. EXTERIORES	44.69 m ²

SUP. JARDIN APROXIMADO.....134.17 m²