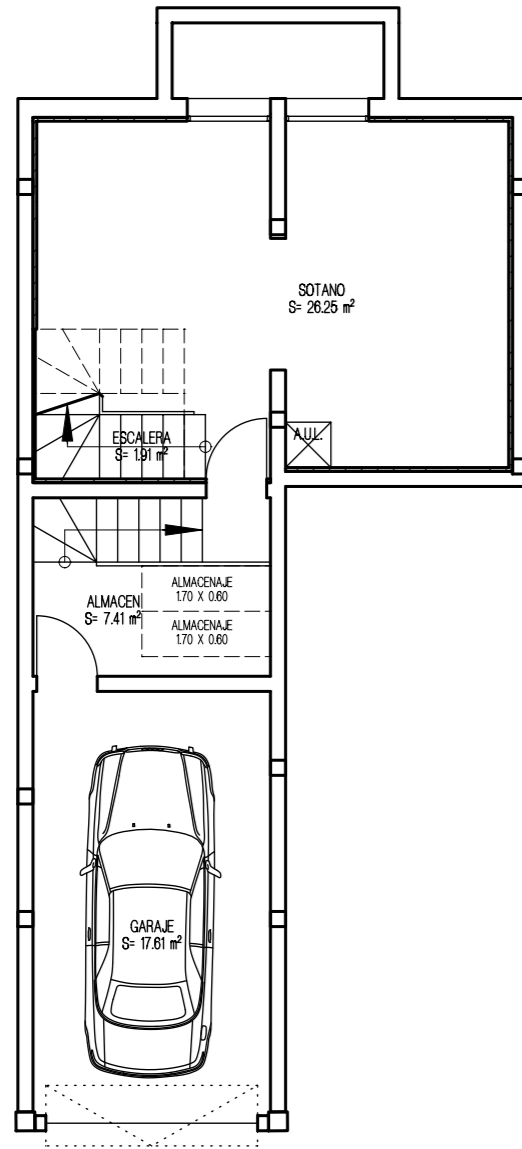


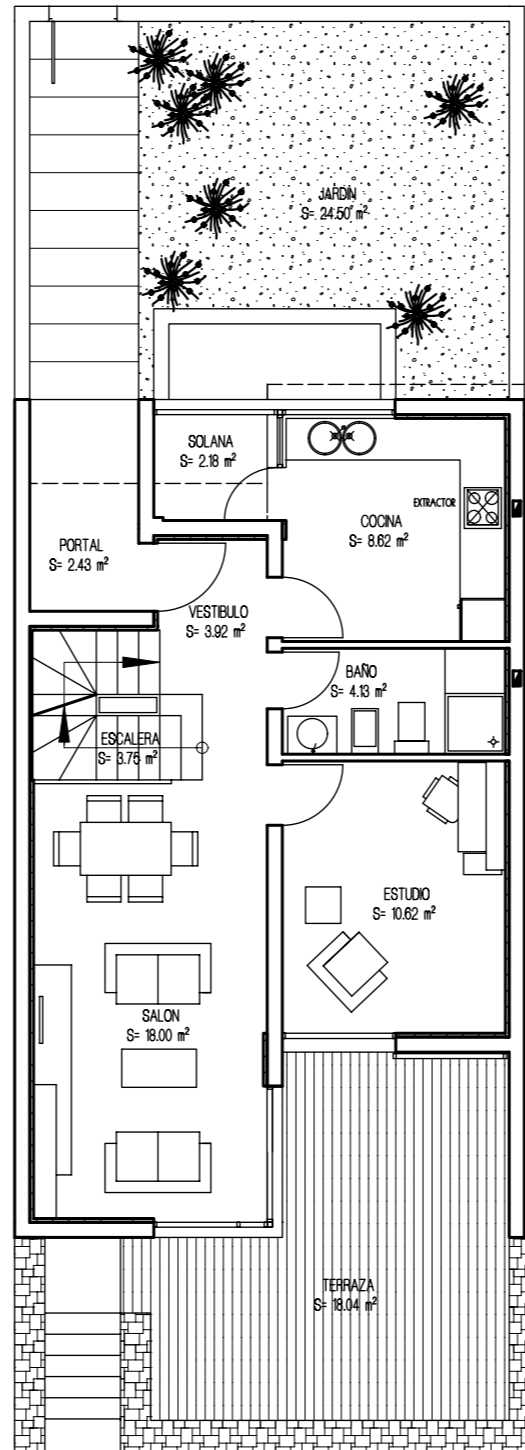
# VIVIENDA UNIFAMILIAR 3 - TIPO 3A'

PLANTA GARAJE

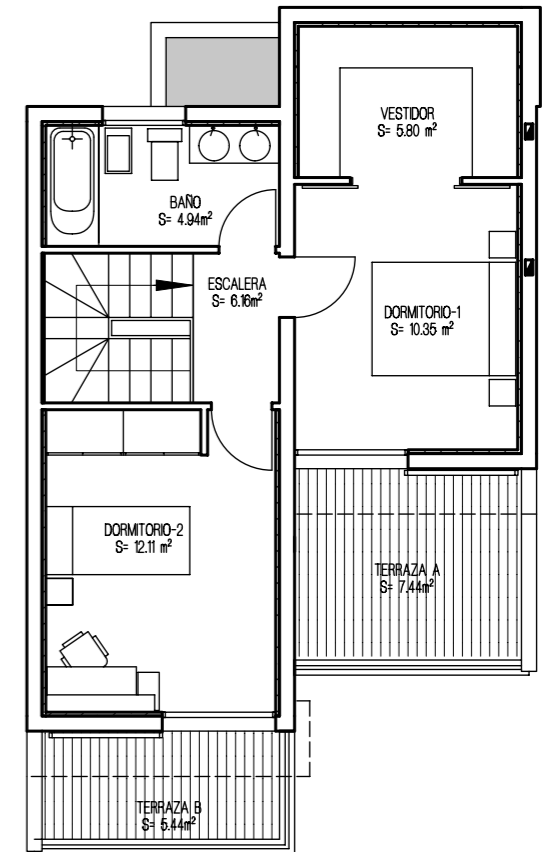


APARCAMIENTO 7

PLANTA BAJA

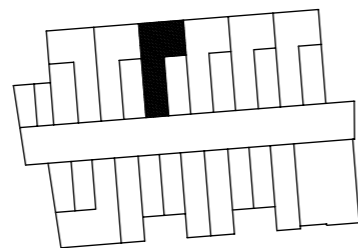


PLANTA ALTA

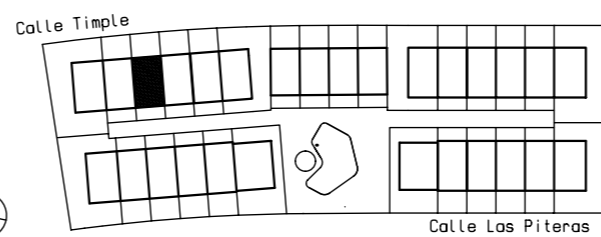


SUPERFICIES CONSTRUIDAS	
PLANTA ALTA	47.28 m <sup>2</sup>
PLANTA BAJA	58.92 m <sup>2</sup>
PLANTA SÓTANO	62.01 m <sup>2</sup>
SUP. CONSTRUIDA TOTAL	168.21 m <sup>2</sup>
SUPERFICIES UTILES	
PLANTA ALTA	39.36 m <sup>2</sup>
PLANTA BAJA	50.84 m <sup>2</sup>
PLANTA SÓTANO	53.18 m <sup>2</sup>
SUP. UTIL TOTAL	143.38 m <sup>2</sup>

PLANTA GARAJE



URBANIZACION GENERAL



ESPACIOS EXTERIORES	
TERRAZA P. BAJA	18.04 m <sup>2</sup>
TERRAZA P. ALTA	18.88 m <sup>2</sup>
SOLANA	2.18 m <sup>2</sup>
TOTAL E. EXTERIORES	39.10 m <sup>2</sup>
SUP. JARDIN APROXIMADO	24.50 m <sup>2</sup>