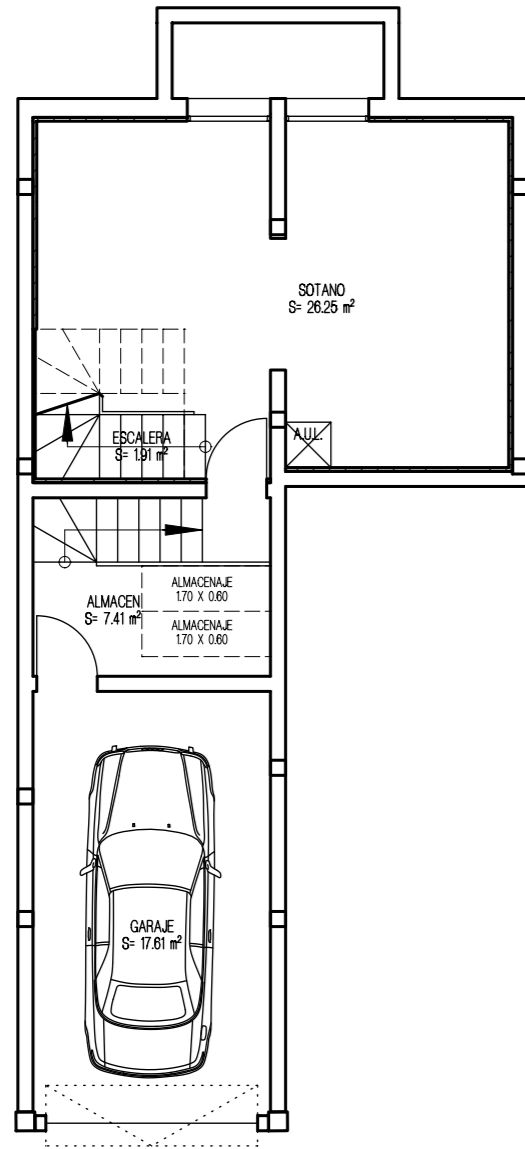


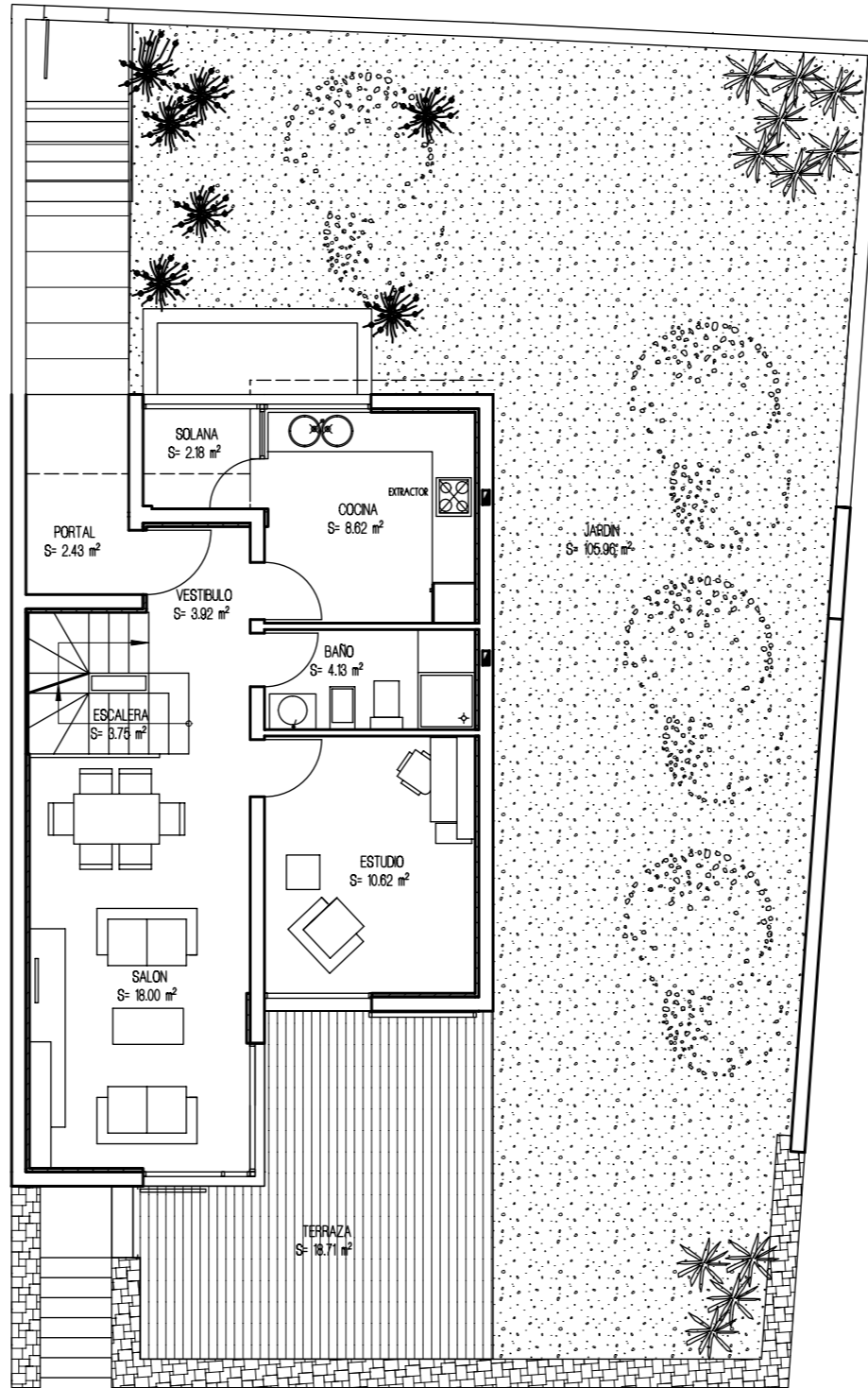
VIVIENDA UNIFAMILIAR 6 - TIPO 3A'

PLANTA GARAJE

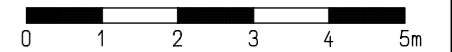
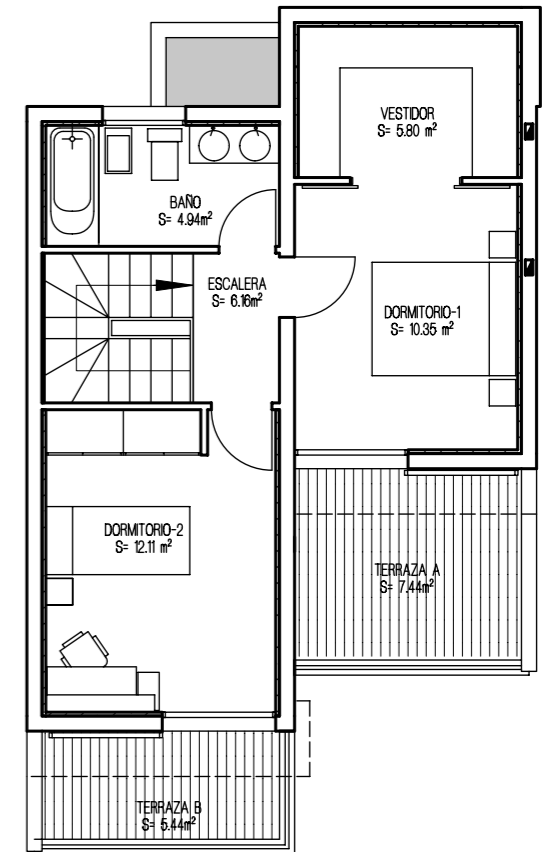


APARCAMIENTO 13

PLANTA BAJA

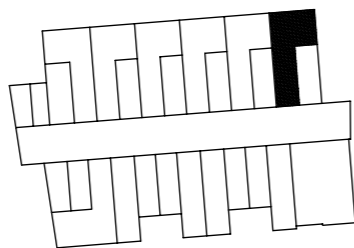


PLANTA ALTA

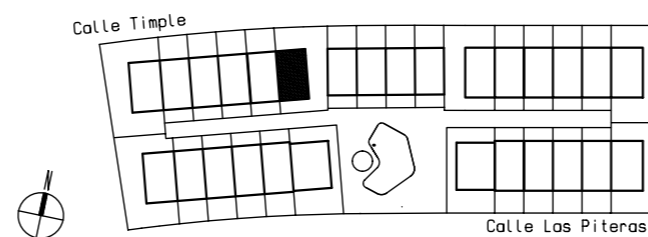


SUPERFICIES CONSTRUIDAS	
PLANTA ALTA	47.28 m ²
PLANTA BAJA	58.92 m ²
PLANTA SÓTANO	62.01 m ²
SUP. CONSTRUIDA TOTAL	168.21 m ²
SUPERFICIES UTILES	
PLANTA ALTA	39.36 m ²
PLANTA BAJA	50.84 m ²
PLANTA SÓTANO	53.18 m ²
SUP. UTIL TOTAL	143.38 m ²

PLANTA GARAJE



URBANIZACION GENERAL



ESPACIOS EXTERIORES	
TERRAZA P. BAJA	18.71 m ²
TERRAZA P. ALTA	18.88 m ²
SOLANA	2.18 m ²
TOTAL E. EXTERIORES	39.77 m ²
SUP. JARDIN APROXIMADO	105.96 m ²