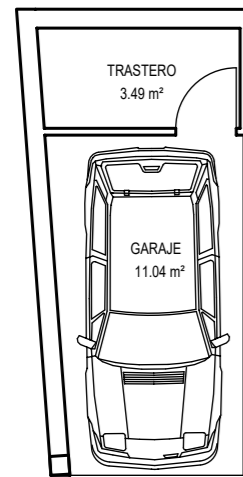


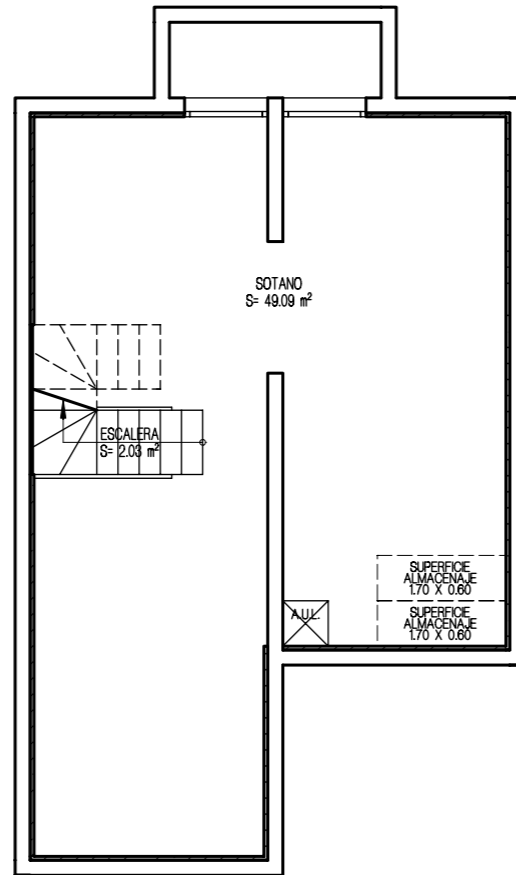
VIVIENDA UNIFAMILIAR 7 - TIPO 2A

PLANTA GARAJE

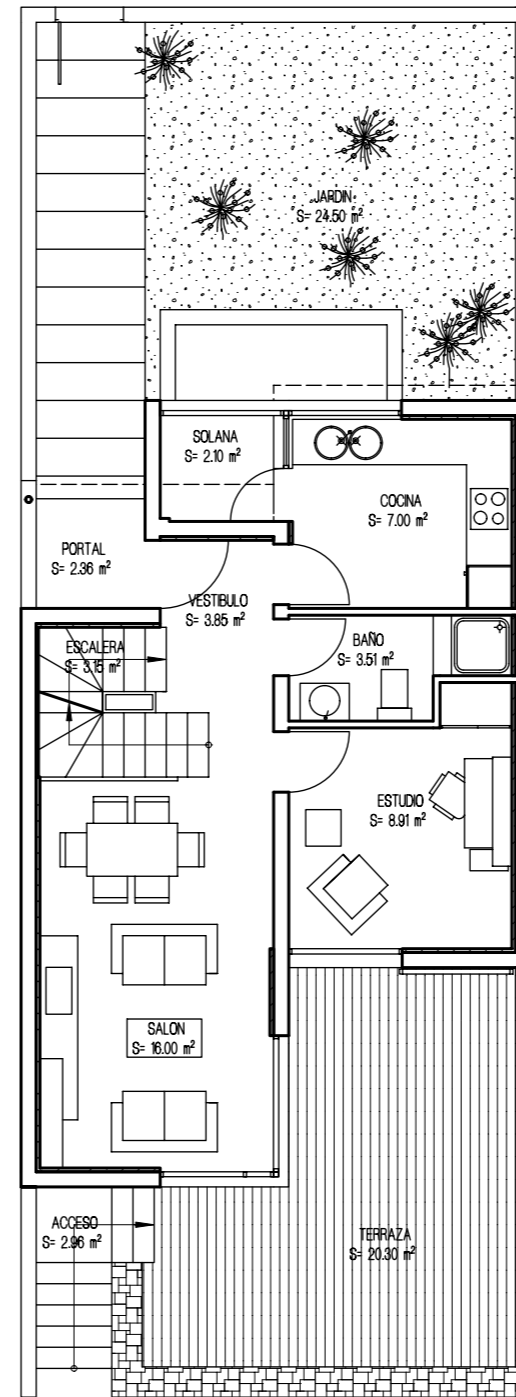


APARCAMIENTO 1

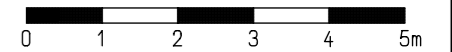
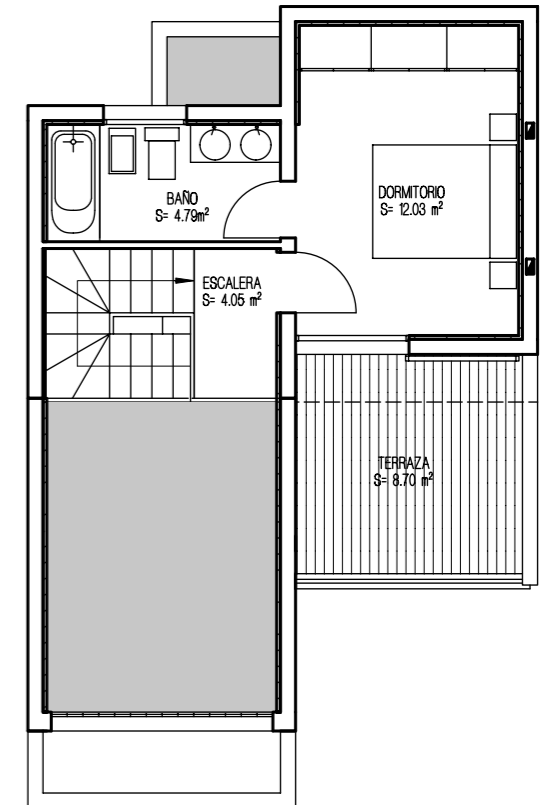
PLANTA SÓTANO



PLANTA BAJA

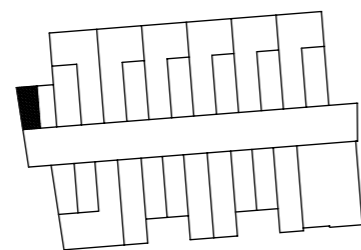


PLANTA ALTA



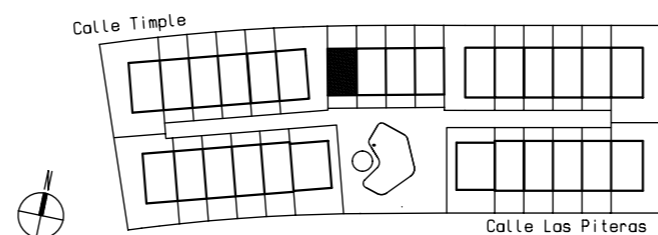
SUPERFICIES CONSTRUIDAS	
PLANTA ALTA	29.49 m ²
PLANTA BAJA	49.74 m ²
PLANTA SÓTANO	60.39 m ²
SUP. CONSTRUIDA TOTAL	139.62 m ²
SUPERFICIES UTILES	
PLANTA ALTA	20.87 m ²
PLANTA BAJA	44.78 m ²
PLANTA SÓTANO	51.12 m ²
SUP. UTIL TOTAL	118.02 m ²

PLANTA GARAJE



SUP. CONSTRUIDA GARAJE: 17.25 m²

URBANIZACION GENERAL



ESPACIOS EXTERIORES	
TERRAZA P. BAJA	20.30 m ²
TERRAZA P. ALTA	8.70 m ²
SOLANA	2.10 m ²
TOTAL E. EXTERIORES	31.10 m ²
SUP. JARDIN APROXIMADO	24.50 m ²