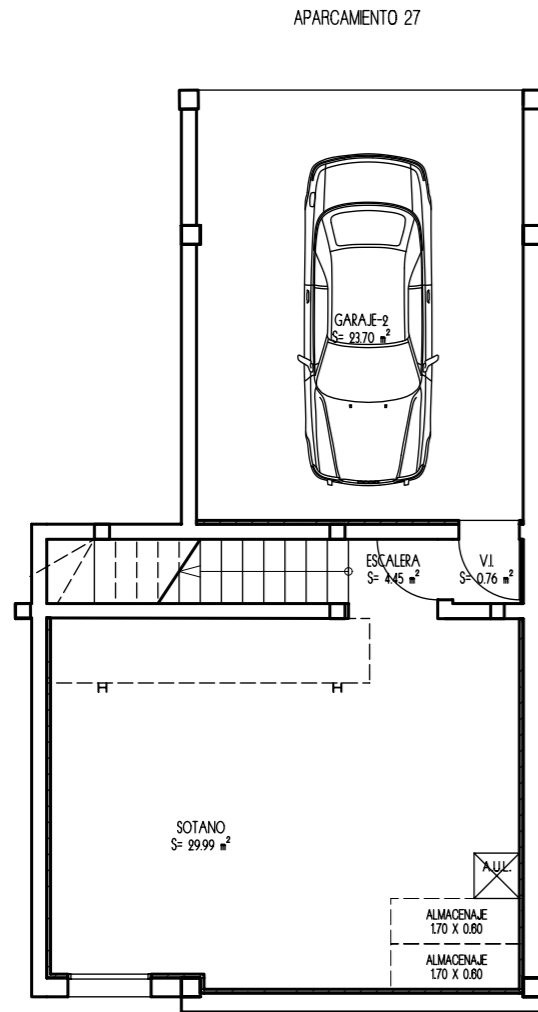
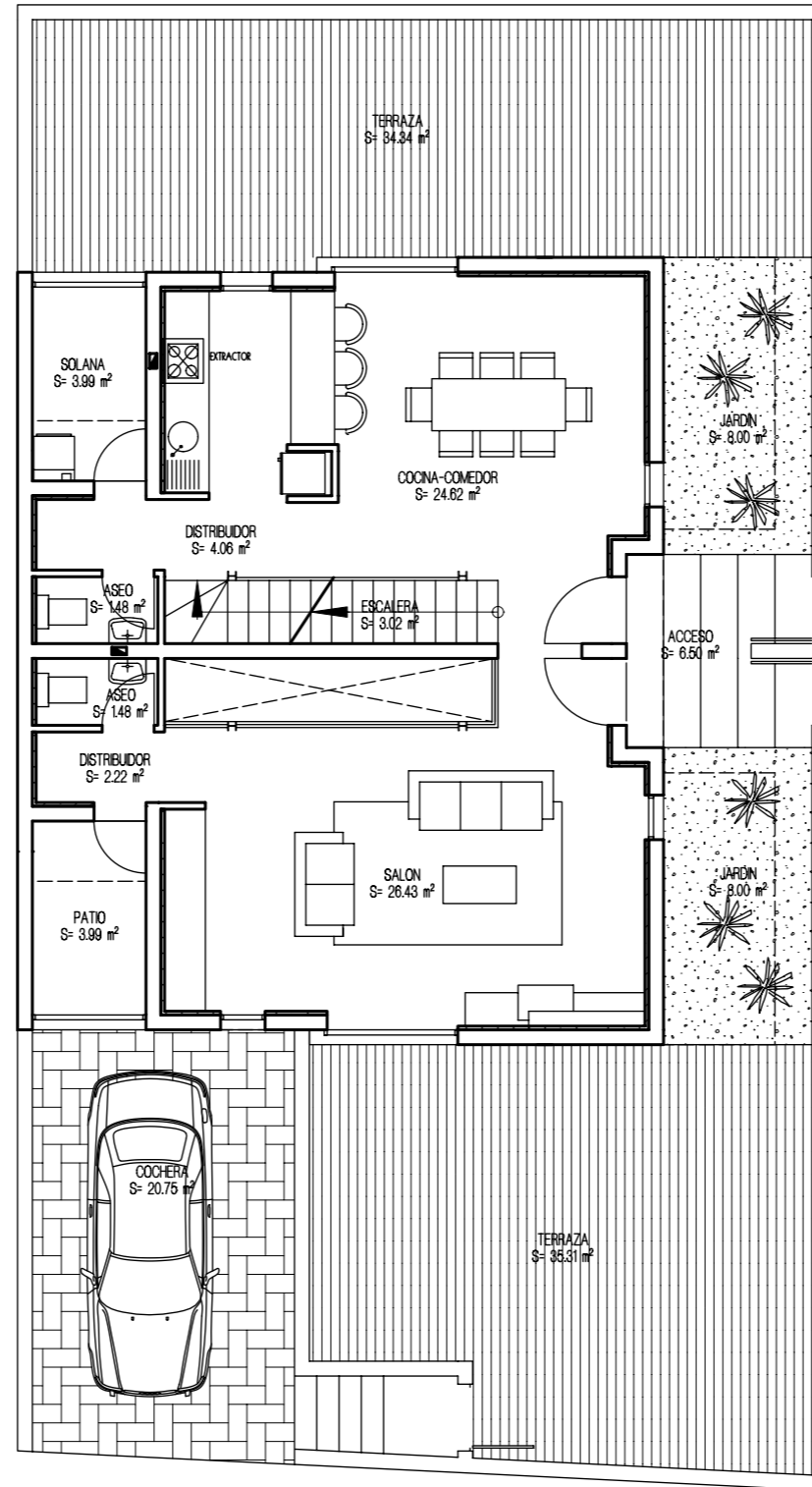


VIVIENDA UNIFAMILIAR 22 - TIPO 2B'

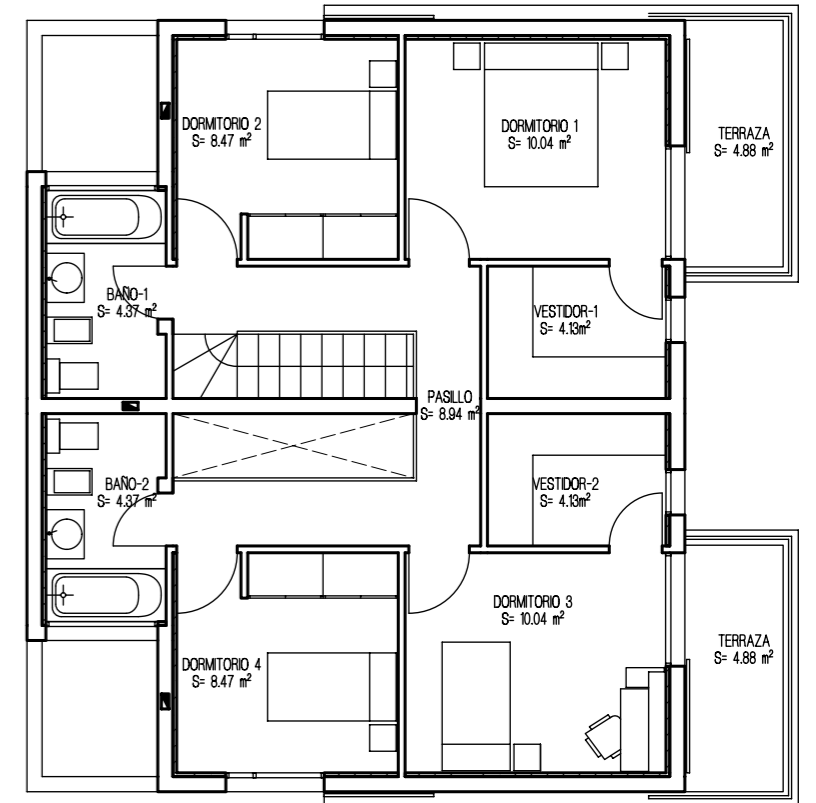
PLANTA GARAJE



PLANTA BAJA

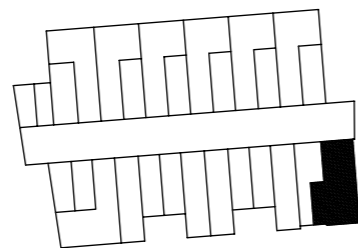


PLANTA ALTA

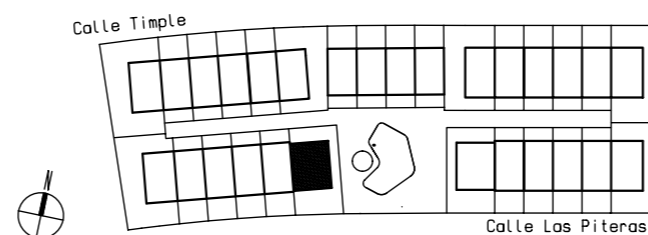


SUPERFICIES CONSTRUIDAS	
PLANTA ALTA	76.32 m ²
PLANTA BAJA	75.38 m ²
PLANTA SÓTANO	70.59 m ²
SUP. CONSTRUIDA TOTAL	222.29 m ²
SUPERFICIES UTILES	
PLANTA ALTA	62.96 m ²
PLANTA BAJA	64.15 m ²
PLANTA SÓTANO	58.90 m ²
SUP. UTIL TOTAL	186.01 m ²

PLANTA GARAJE



URBANIZACION GENERAL



ESPACIOS EXTERIORES	
COCHERA	20.75 m ²
TERRAZA P. BAJA	69.65 m ²
TERRAZA P. ALTA	9.76 m ²
SOLANA	2.18 m ²
PATIO	3.99 m ²
TOTAL E. EXTERIORES	106.33 m²
SUP. JARDIN APROXIMADO	16.00 m ²